

2014 ORLEANS COUNTY, VT LIVABILITY REPORT

Social Participation and Inclusion



LARGEST UNMET NEED

-59.9%

CULTURAL ACTIVITIES FOR DIVERSE POPULATIONS



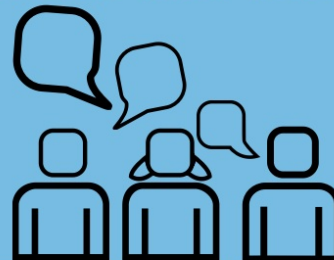
76.8% say it is important to have a variety of cultural activities for diverse populations. Only 16.9% say this is present in their community; resulting in a gap of 59.9%.



INTERACTION

78%

INTERACT WITH FRIENDS AND NEIGHBORS AT LEAST SEVERAL TIMES A WEEK



MOST IMPORTANT FEATURE

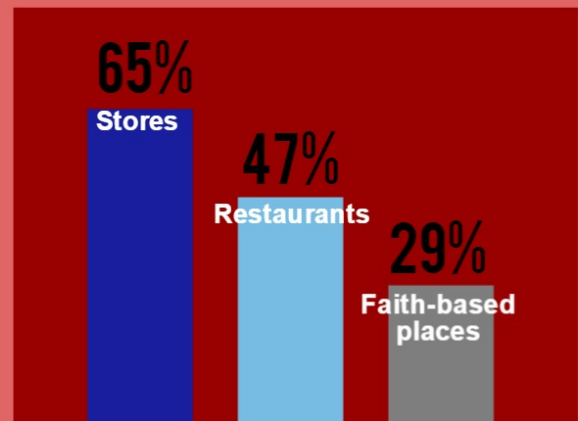
ACTIVITIES THAT ARE AFFORDABLE TO ALL RESIDENTS



Activities that are affordable to all residents is the most important social participation feature (76%) to Orleans County residents age 45-plus.



PLACES TO SOCIALIZE



The top 3 places Orleans County residents age 45-plus go when seeking out social opportunities in their community are stores, restaurants, and faith-based places