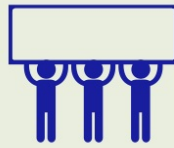


2014 NEWPORT, VT LIVABILITY REPORT

Social Participation and Inclusion



LARGEST UNMET NEED

-62.9%

CULTURAL ACTIVITIES FOR DIVERSE POPULATIONS



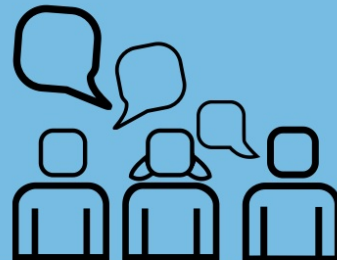
82.9% say it is important to have a variety of cultural activities for diverse populations. Only 20.0% say this is present in their community; resulting in a gap of 62.9%.



INTERACTION

83%

INTERACT WITH FRIENDS AND NEIGHBORS SEVERAL TIMES A WEEK OR MORE



MOST IMPORTANT FEATURE

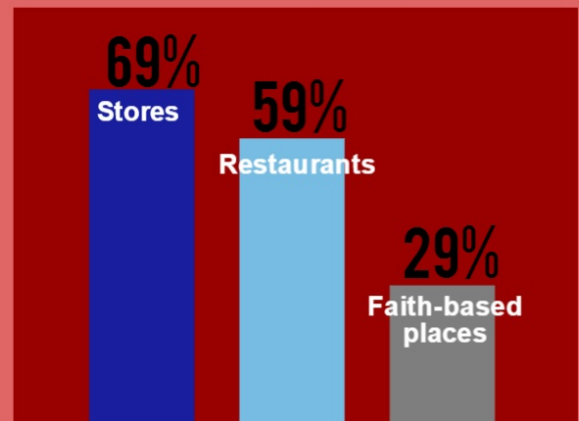
ACTIVITIES THAT ARE AFFORDABLE TO ALL RESIDENTS



Activities that are affordable to all residents is the most important social participation feature (83%) to Newport residents age 45-plus.



PLACES TO SOCIALIZE



The top 3 places Newport residents age 45-plus go when seeking out social opportunities in their community are stores, restaurants, and faith-based places.