



## Social Security: 2012 New Jersey Quick Facts



### New Jersey's 65+ population is expanding.

In 2010, New Jersey's population was about 8.7 million, with 14% being age 65 and older (1,190,000 residents).<sup>1</sup> In 2015, the 65+ population will make up 15% of the state's population, and in 2030, it will be 21%.<sup>2,3</sup>

### New Jersey ranks 3<sup>rd</sup> in income level among the states.

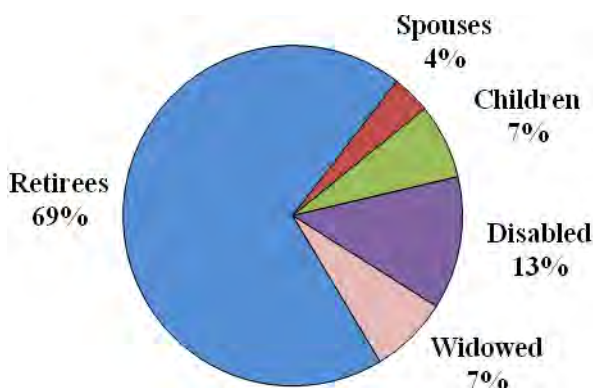
The average personal income in New Jersey was \$50,781 in 2010. New Jersey's per capita income ranks lower than Connecticut (1<sup>st</sup>) but higher than any other Northeastern state.<sup>4</sup>

### One in six New Jersey residents receives Social Security.

The Social Security program not only provides monthly benefits to retired workers, but also to families when the worker retires, dies, or becomes disabled. In 2010, over 54 million Americans received Social Security benefits; of these, 1,472,335 lived in New Jersey.<sup>5</sup>

In 2010, one in six New Jersey residents received Social Security.<sup>1</sup> While 69% of beneficiaries are retirees, 31% are not: 109,435 are widows and widowers; 185,970 are people with disabilities; 54,231 are spouses; and 105,103 are children.<sup>5</sup>

**New Jersey Social Security Beneficiaries**



### Social Security pumps over 21 billion dollars into New Jersey's economy.

In 2010, New Jersey residents received 21.3 billion dollars from Social Security.<sup>6</sup> The average yearly Social Security benefit for a New Jersey retiree in 2010 was \$15,343—or about \$1,279 a month.<sup>7</sup>

### Nearly all New Jersey residents age 65 or older receive Social Security.

Nationally, as well as in New Jersey, 17% of all people receive Social Security benefits. However, older people are more likely to receive the benefit, with 92% of those ages 65 and over receiving it nationwide, and 91% of older New Jersey residents receiving it.<sup>1</sup>

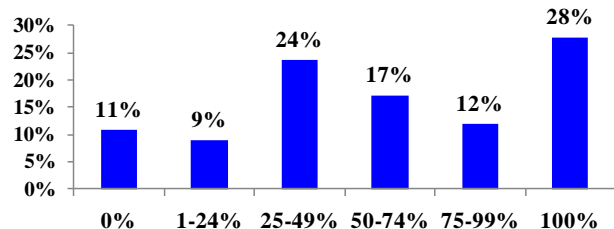
### Social Security lifts more than one-third of retirees from poverty.

In 2009, more than one-third (35%) of the nation's older population would be living in poverty if they were not receiving Social Security. In New Jersey, 29% of state's 65+ population would have incomes below the poverty line if they did not receive Social Security.<sup>8</sup>

### Social Security is the only source of income for more than a quarter of New Jersey residents age 65+.

Social Security makes up 50 percent or more of the income for over half of New Jersey residents age 65 and older. More than a quarter of older New Jerseyans rely on Social Security as their only source of income.<sup>9,10</sup>

**Income Percentage from Social Security for New Jerseyans 65+**



## End Notes

<sup>1</sup> OASDI Beneficiaries by State and County, 2010. Social Security Administration:  
[http://www.ssa.gov/policy/docs/statcomps/oasdi\\_sc/2010/table01.html](http://www.ssa.gov/policy/docs/statcomps/oasdi_sc/2010/table01.html)

<sup>2</sup> Projections of the Population, By Age and Sex, of States: 1995 to 2025. United States Census Bureau:  
<http://www.census.gov/population/projections/state/stpjage.txt>

<sup>3</sup> Ranking of States by Projected Percent of Population age 65 and Over: 2000, 2010, and 2030. United States Census Bureau:  
<http://www.census.gov/population/www/projections/projectionsagesex.html>

<sup>4</sup> State Bureau of Economic Analysis Regional Factsheet, 2010. U.S. Dept. of Commerce:  
<http://www.bea.gov/regional/bearfacts/statebf.cfm>

<sup>5</sup> OASDI Beneficiaries by State and County, 2010. Social Security Administration:  
[http://www.ssa.gov/policy/docs/statcomps/oasdi\\_sc/2010/table02.html](http://www.ssa.gov/policy/docs/statcomps/oasdi_sc/2010/table02.html)

<sup>6</sup> OASDI Estimated Total Benefits Paid, 2010, Social Security Administration:  
<http://www.ssa.gov/policy/docs/statcomps/supplement/2011/5j.html#table5.j1>

<sup>7</sup> OASDI Number and Total Monthly Benefits for Beneficiaries, age 65 or older, 2010:  
<http://www.ssa.gov/policy/docs/statcomps/supplement/2011/5j.html#table5.j3>

<sup>8</sup> AARP analysis from The March 2009 Annual Social and Economic (ASEC) Supplement from the Current Population Survey (CPS).

<sup>9</sup> AARP analysis using data from the 2009 U.S. Census Bureau American Community Survey.

<sup>10</sup> For a three-year estimate refer to “Social Security is a Critical Income Source for Older Americans: State-Level Estimates, 2007–2009.” AARP Public Policy Institute:  
<http://www.aarp.org/work/social-security/info-09-2011/fs236-ss.html>

---

AARP is a nonprofit, nonpartisan organization with a membership that helps people 50+ have independence, choice and control in ways that are beneficial and affordable to them and society as a whole. AARP does not endorse candidates for public office or make contributions to either political campaigns or candidates. We produce AARP The Magazine, the definitive voice for 50+ Americans and the world's largest-circulation magazine with over 35.1 million readers; AARP Bulletin, the go-to news source for AARP's millions of members and Americans 50+; AARP VIVA, the only bilingual U.S. publication dedicated exclusively to the 50+ Hispanic community; and our website, AARP.org. AARP Foundation is an affiliated charity that provides security, protection, and empowerment to older persons in need with support from thousands of volunteers, donors, and sponsors. We have staffed offices in all 50 states, the District of Columbia, Puerto Rico, and the U.S. Virgin Islands.