



## Social Security: 2012 Arkansas Quick Facts



### Arkansas' 65+ population is expanding.

In 2010, Arkansas's population was about 2.9 million, with 14% being age 65 and older (421,000) residents.<sup>1</sup> In 2015, the 65+ population will make up 16% of the state's population, and in 2030, it will be 20%.<sup>2,3</sup>

### Arkansas ranks 46<sup>th</sup> in per capita income.

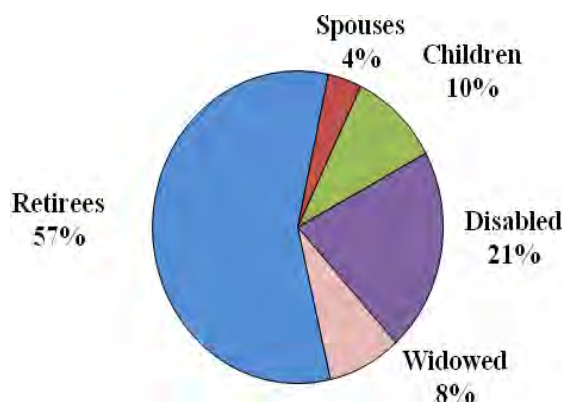
The average personal income in Arkansas was \$33,150 in 2010, giving it one of the lowest per capita incomes in the country (46<sup>th</sup>).<sup>4</sup> Arkansas leads West Virginia (47<sup>th</sup>) and Mississippi (50<sup>th</sup>) in personal income.

### One in five Arkansas residents receives Social Security.

The Social Security program not only provides monthly benefits to retired workers, but also to families when the worker retires, dies, or becomes disabled. In 2010, over 54 million Americans received Social Security benefits; of these, 635,041 lived in Arkansas.<sup>5</sup>

In 2010, one in five Arkansas residents received Social Security.<sup>1</sup> While 57% of beneficiaries are retirees, 43% are not: 51,890 are widows and widowers; 133,719 people with disabilities; 23,828 are spouses; and 63,756 are children.<sup>5</sup>

**Arkansas Social Security Beneficiaries**



### Social Security pumps over seven billion dollars into Arkansas' economy.

In 2010, Arkansas residents received \$7.7 billion from Social Security.<sup>6</sup> The average yearly Social Security benefit for an Arkansas retiree in 2010 was \$13,056—or about \$1,088 a month.<sup>7</sup>

### Nearly all Arkansas residents age 65 or older receive Social Security.

Over 17% of all people receive Social Security benefits; in Arkansas, 22% of residents do. However, older people are more likely to receive the benefit, with 92% of those ages 65 or older receiving it nationwide, and 93% of older Arkansas residents receiving it.<sup>1</sup>

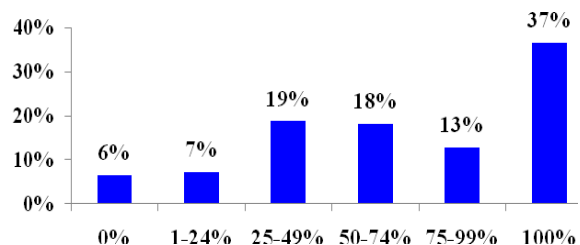
### Social Security lifts four in ten of Arkansas retirees from poverty.

In 2009, more than one-third (35%) of the nation's older population would be living in poverty if they were not receiving Social Security. In Arkansas, the rate is even higher: 41% of the state's 65+ population would have incomes below the poverty line if they did not receive Social Security.<sup>8</sup>

### Social Security is the only source of income for nearly four in ten Arkansas residents age 65+.

Social Security makes up 50 percent or more of the income for over two-thirds of Arkansas residents age 65 and older. Nearly four in ten older Arkansas residents rely on Social Security as their only source of income.<sup>9, 10</sup>

**Income Percentage from Social Security for Arkansas Residents 65+**



## End Notes

<sup>1</sup> OASDI Beneficiaries by State and County, 2010. Social Security Administration:  
[http://www.ssa.gov/policy/docs/statcomps/oasdi\\_sc/2010/table01.html](http://www.ssa.gov/policy/docs/statcomps/oasdi_sc/2010/table01.html)

<sup>2</sup> Projections of the Population, By Age and Sex, of States: 1995 to 2025. United States Census Bureau:  
<http://www.census.gov/population/projections/state/stpjage.txt>

<sup>3</sup> Ranking of States by Projected Percent of Population age 65 and Over: 2000, 2010, and 2030. United States Census Bureau:  
<http://www.census.gov/population/www/projections/projectionsagesex.html>

<sup>4</sup> State Bureau of Economic Analysis Regional Factsheet, 2010. U.S. Dept. of Commerce:  
<http://www.bea.gov/regional/bearfacts/statebf.cfm>

<sup>5</sup> OASDI Beneficiaries by State and County, 2010. Social Security Administration:  
[http://www.ssa.gov/policy/docs/statcomps/oasdi\\_sc/2010/table02.html](http://www.ssa.gov/policy/docs/statcomps/oasdi_sc/2010/table02.html)

<sup>6</sup> OASDI Estimated Total Benefits Paid, 2009, Social Security Administration:  
<http://www.ssa.gov/policy/docs/statcomps/supplement/2011/5j.html#table5.j1>

<sup>7</sup> OASDI Number and Total Monthly Benefits for Beneficiaries, age 65 or older, 2009:  
<http://www.ssa.gov/policy/docs/statcomps/supplement/2011/5j.html#table5.j3>

<sup>8</sup> AARP analysis from The March 2009 Annual Social and Economic (ASEC) Supplement from the Current Population Survey (CPS).

<sup>9</sup> AARP analysis using data from the 2009 U.S. Census Bureau American Community Survey.

<sup>10</sup> For a three-year estimate refer to “Social Security is a Critical Income Source for Older Americans: State-Level Estimates, 2007–2009.” AARP Public Policy Institute:  
<http://www.aarp.org/work/social-security/info-09-2011/fs236-ss.html>

---

AARP is a nonprofit, nonpartisan organization with a membership that helps people 50+ have independence, choice and control in ways that are beneficial and affordable to them and society as a whole. AARP does not endorse candidates for public office or make contributions to either political campaigns or candidates. We produce AARP The Magazine, the definitive voice for 50+ Americans and the world's largest-circulation magazine with over 35.1 million readers; AARP Bulletin, the go-to news source for AARP's millions of members and Americans 50+; AARP VIVA, the only bilingual U.S. publication dedicated exclusively to the 50+ Hispanic community; and our website, AARP.org. AARP Foundation is an affiliated charity that provides security, protection, and empowerment to older persons in need with support from thousands of volunteers, donors, and sponsors. We have staffed offices in all 50 states, the District of Columbia, Puerto Rico, and the U.S. Virgin Islands.