



# ACROSS THE STATES

PROFILES OF LONG-TERM SERVICES  
AND SUPPORTS

**OHIO**



by Ari Houser  
Wendy Fox-Grage  
Kathleen Ujvari

NINTH EDITION **2012**

# INTRODUCTION

*Across the States 2012: Profiles of Long-Term Services and Supports* is the ninth edition of the AARP Public Policy Institute's state long-term services and supports reference report.

This short report provides key long-term services and supports information for a single state. Complete data for all states are contained in the full report and executive summary.

Published for the past 18 years, the *Across the States* series was developed to help inform policy discussions among public and private sector leaders in long-term services and supports throughout the United States. *Across the States 2012* presents comparable state-level and national data for more than 140 indicators, drawn together from a wide variety of sources into a single reference. This publication presents up-to-date data and is displayed in easy-to-use maps, graphics, tables, and state profiles.

*Across the States 2012* comes in two volumes:

- A full report with an overview of key findings and trends, maps and graphs, and individual profiles for each state, the District of Columbia, and the nation as a whole. The full report provides a comprehensive picture of long-term services and supports in each state.
- An executive summary with an overview of key findings and trends, and ranking tables for each indicator, such as percentage of Medicaid long-term services and supports spending for older people and adults with physical disabilities going to home and community-based services. This permits readers to easily see variations among states.

Some of the indicators in *Across the States 2012* may be found in prior editions. Please exercise caution when making comparisons with information in earlier editions due to changes in the source or definition. Complete descriptions of all indicators, and how they may differ from previous editions, can be found in the Data Documentation section in the back of the full report. Data sources and descriptions of indicators are only found in the full report, not in the executive summary.

Additional indicators on health care spending, health status, and health care utilization for the age 50+ population can be found in another AARP Public Policy Institute report, *Quick Health Facts 2010: Selected State Data on Older Americans*.

Copies of *Across the States 2012* are available free of charge. To order, please call the AARP Public Policy Institute at (202) 434-3890 or email [jgasaway@aarp.org](mailto:jgasaway@aarp.org).

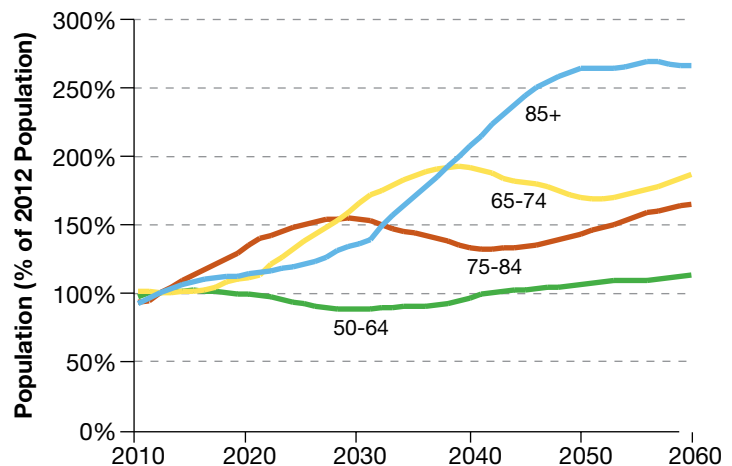
The full report and executive summary are also available on the web. The most recent edition of *Across the States* can be found at <http://www.aarp.org/acrossthestates>.

## OHIO

Population & Projections	Year	State Pop. (1,000s)	% of Total Population	Rank	U.S.	% Change from 2012	Rank	U.S.
All ages	2012	11,554		7	315,311			
	2032	12,452		8	376,660	+8%	48	+19%
	2050	14,103		9	434,447	+22%	48	+38%
Age 50-64	2012	2,392	20.7%	9	19.2%			
	2032	2,127	17.1%	6	16.4%	-11%	43	+2%
	2050	2,540	18.0%	12	16.6%	+6%	44	+19%
Age 65+	2012	1,703	14.7%	14	13.6%			
	2032	2,685	21.6%	8	19.8%	+58%	43	+74%
	2050	2,900	20.6%	18	20.4%	+70%	47	+107%
Age 65-74	2012	907	7.9%	15	7.4%			
	2032	1,362	10.9%	11	10.1%	+50%	38	+64%
	2050	1,300	9.2%	20	9.1%	+43%	43	+69%
Age 75-84	2012	536	4.6%	10	4.2%			
	2032	936	7.5%	9	6.8%	+75%	45	+94%
	2050	912	6.5%	22	6.6%	+70%	47	+116%
Age 85+	2012	260	2.3%	10	2.0%			
	2032	388	3.1%	10	2.9%	+49%	40	+69%
	2050	688	4.9%	18	4.8%	+165%	45	+224%

Older People of Color (%), 2010		
State	Rank	U.S.
10.9%	29	20.1%
Asian/Pacific Islander		
State	Rank	U.S.
0.8%	33	3.6%
Black		
State	Rank	U.S.
8.5%	17	8.5%
Hispanic		
State	Rank	U.S.
1.0%	37	6.9%

**Projected Growth in the Older Population in Ohio as a Percentage of 2012 Population, by Age Group**



Note: the highest data value within each ranking is indicated by a rank of 1. For indicators in which both a total number and a ratio are given for the state value (percent of population, per person in the state, etc), the rank and U.S. values correspond to the ratio column.

## POPULATION &amp; CHARACTERISTICS

<b>Living Arrangements</b>	<b>State</b>	<b>Rank</b>	<b>U.S.</b>
Men per 100 women age 85+, 2010	46	31	48
People age 75+ living alone, 2010	36%	11	34%
People age 60+ with grandchildren in household, 2010	3.9%	32	5.5%
People age 60+ responsible for raising grandchildren, 2010	1.3%	30	1.6%
Percent of age 65+ households with someone under 18, 2010	4.8%	35	7.0%

<b>Income &amp; Poverty</b>	<b>State</b>	<b>Rank</b>	<b>U.S.</b>
Median household income age 65+, 2010	\$31,798	36	\$34,381
At/below poverty level age 65+, 2010	7.7%	31	9.0%
At/below 250% of poverty level age 65+, 2010	44%	17	42%
Women age 75+ at/below poverty level, 2010	10.4%	36	12.2%
Women age 75+ at/below 250% of poverty level, 2010	59%	13	54%
Bachelor level education or higher age 65+, 2010	17%	38	21%

<b>Disability Rates</b>	<b>Number (1,000s)</b>	<b>Percent</b>	<b>Rank</b>	<b>U.S.</b>
People age 65+ with disabilities, 2010				
Self-care difficulty	123	7.9%	26	8.8%
Cognitive difficulty	137	8.8%	27	9.5%
Any disability	569	36%	27	37%
People age 18-64 with disabilities, 2010				
Self-care difficulty	140	2.0%	14	1.8%
Cognitive difficulty	350	4.9%	16	4.2%
Any disability	804	11.4%	14	10.0%

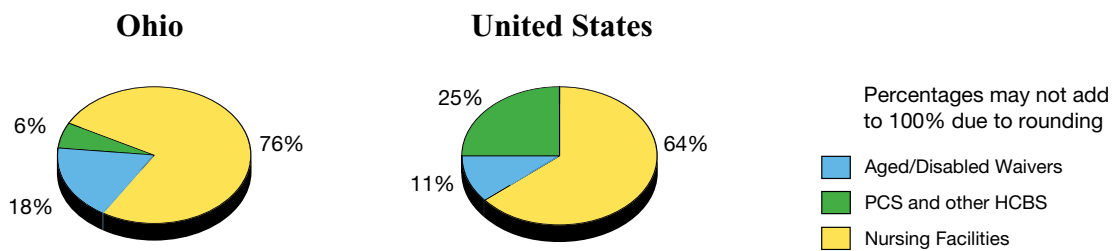
<b>Family Caregivers</b>	<b>State</b>	<b>Per 1,000 Population</b>	<b>Rank</b>	<b>U.S.</b>
Family caregivers, 2009	1,660,000	144	16	137
Economic value of family caregiving, 2009 (state in millions of \$)	\$17,500	\$1,520	25	\$1,460
Economic value per hour, 2009	\$11.03		29	\$11.16
Ratio of the economic value of family caregiving to Medicaid long-term care spending, 2009	3.5		31	3.8

<b>Long-Term Care Insurance</b>	<b>State</b>	<b>Per 1,000 Age 40+</b>	<b>Rank</b>	<b>U.S.</b>
Private long-term care insurance policies in effect, 2010	216,142	39	31	45

## PUBLIC LTSS EXPENDITURES

Medicaid Expenditures	State	Rank	U.S.
Total Medicaid expenditures (millions), 2009	\$14,080	6	\$368,330
Federal Medicaid Assistance Percentage (FMAP), 2009	63.42%	22	
Medicaid home and community-based services (HCBS) as a % of long-term services and supports (LTSS) spending, for older people and adults with physical disabilities, 2009 *	24%	32	36%
Medicaid HCBS spending as a % of LTSS spending, for all populations, 2009 *	33%	41	44%

### Medicaid Long-Term Services and Supports Spending for Older People and Adults with Physical Disabilities in Ohio and the U.S., 2009



LTSS & Home Health Expenditures	Total (millions)	Per Person in the State	Rank	U.S.
Medicaid LTSS expenditures for older people and adults with physical disabilities, 2009	\$3,382	\$293	12	\$261
Nursing facilities	\$2,565	\$222	12	\$168
HCBS	\$818	\$71	23	\$94
Aged/disabled waiver services	\$607	\$53	10	\$29
Personal care services (PCS) **	NA	NA	NA	\$45
Home health services	\$188	\$16	12	\$16
Other HCBS ***	\$22	\$2	11	\$4
Medicaid LTSS expenditures for all populations, 2009	\$5,691	\$494	14	\$413
Institutional services	\$3,839	\$333	8	\$232
HCBS	\$1,852	\$161	24	\$181
Waiver services (all populations)	\$1,642	\$142	17	\$114
Other HCBS (including PCS and home health)	\$210	\$18	32	\$68
State-funded HCBS expenditures for older people and adults with physical disabilities, 2009	\$12	1.00	38	\$4.83

Note: the highest data value within each ranking is indicated by a rank of 1. For indicators in which both a total number and a ratio are given for the state value (percent of population, per person in the state, etc), the rank and U.S. values correspond to the ratio column.

\* HCBS and LTSS include home health services for these indicators. This treatment is consistent with most earlier editions of Across the States, but differs from Across the States 2009, in which home health was categorized separately from LTSS.

\*\* 15 states did not report any PCS spending in 2009; the lowest possible rank is 36. In 2008, 19 states did not report any PCS participants; the lowest possible rank is 32.

\*\*\* "Other HCBS" includes PACE, self-directed services authorized under Section 1915(j), and several other programs. Only 26 states have spending categorized as this type; the lowest rank for this indicator is 22.

<b>Medicaid HCBS Participants By Type of Service</b>	<b>State</b>	<b>Per 1,000 Population</b>	<b>Rank</b>	<b>U.S.</b>
Nursing facilities (NF), 2008	83,530	7.3	9	5.3
HCBS (older people and adults with PD), 2008	76,001	6.6	27	8.2
Aged/disabled waiver services	44,693	3.9	12	2.2
Personal care services (PCS) **	NA	NA	NA	3.0
Home health services	31,308	2.7	13	3.0
Institutional services (NF and ICF-MR), 2008	91,274	7.9	8	5.6
HCBS (all populations), 2008	96,932	8.4	27	10.1
Waiver services (all populations)	65,624	5.7	15	4.1
Other HCBS (including PCS and home health)	31,308	2.7	30	6.0
Adults with disabilities self-directing services, 2011	1,082	0.09	47	2.43

<b>Medicaid Participant LTSS Balance</b>	<b>State</b>	<b>Rank</b>	<b>U.S.</b>
Medicaid aged/disabled waiver participants per 100 beneficiaries in nursing facilities, 2008	54	20	42
Medicaid HCBS beneficiaries as a % of LTSS users, for older people and adults with PD, 2008 *	48%	33	61%
Medicaid HCBS beneficiaries as a % of LTSS users, for all populations, 2008 *	52%	34	64%

<b>Medicaid Expenditures Per Person Served</b>	<b>State</b>	<b>Rank</b>	<b>U.S.</b>
Nursing facility services, 2008	\$30,535	22	\$29,533
HCBS expenditures for older people and adults with physical disabilities per person served, 2008 (excluding home health)	\$12,612	12	\$10,957
Aged/disabled waiver services	\$12,612	15	\$10,710
Personal care services **	NA	NA	\$11,142
Home health services	\$4,787	12	\$5,495
ICF-MR services, 2008	\$96,287	32	\$123,053
MR/DD waiver services, 2008	\$40,889	25	\$42,896

## LTSS COSTS

<b>Public &amp; Private Payment Rates</b>	<b>State</b>	<b>Rank</b>	<b>U.S.</b>
Medicaid payment per day for nursing facility care, 2011	\$177	21	\$178
Medicare payment per day for nursing facility care, 2010	\$378	34	\$398
Medicare reimbursement per home health visit, 2010	\$146	39	\$154
Private pay rate per day in nursing facility, 2011	\$190	27	\$193
Private pay rate per month in assisted living, 2011	\$3,325	23	\$3,261
Private pay daily rate for adult day care, 2011	\$50	42	\$60
Private pay hourly rate for home health aide, 2011	\$18	37	\$19



## LTSS RESOURCES

<b>HCBS Resources</b>	<b>State</b>	<b>Per 1,000 Age 65+</b>	<b>Rank</b>	<b>U.S.</b>
Assisted living and residential care facilities, 2010	1,378	0.85	28	1.46
Assisted living and residential care units, 2010	49,405	30	19	31
Personal and home care aides, 2010	12,140	7	42	17
Median hourly wage, 2010	\$9.48		29	\$9.44
Home health aides, 2010	67,140	41	5	24
Median hourly wage, 2010	\$9.36		39	\$9.89
People receiving ACL congregate meals, 2009 *	54,401	34	36	42
People receiving ACL home delivered meals, 2009 *	33,901	21	30	22
Total ACL congregate and home delivered meal expenditures (total in millions of \$), 2009 *	\$51	\$32	30	\$36
Number of health maintenance tasks able to be delegated to LTSS workers (out of 16 tasks), 2011	7		24	

<b>Nursing Facility Resources &amp; Utilization</b>	<b>State</b>	<b>Per 1,000 Age 65+</b>	<b>Rank</b>	<b>U.S.</b>
Total nursing facilities, 2010	980	0.60	9	0.40
Nursing facility beds, 2010	93,445	57	14	42
Nursing facility residents, 2010	79,658	49	8	35
Nursing facility occupancy rate, 2010	85%		26	83%
Direct care nursing hours per resident day, 2010	3.9		17	3.8
RN hours per day, 2010	0.66		29	0.64
Nursing facility staffing turnover, 2010	37%		28	40%

<b>Nursing Facility Resident Characteristics</b>	<b>State</b>	<b>Rank</b>	<b>U.S.</b>
Residents with dementia, 2010	45%	31	46%
Nursing facility residents with low care needs, 2008	14%	31	17%
Residents with Medicaid as primary payer, 2010	63%	21	63%
Residents with Medicare as primary payer, 2010	12%	34	14%
Residents with "other" as primary payer, 2010	25%	16	22%

<b>Quality &amp; Oversight of Nursing Facilities</b>	<b>State</b>	<b>Rank</b>	<b>U.S.</b>
Residents with physical restraints, 2008	5%	9	4%
High risk residents with pressure sores, 2008	11%	22	12%
Long-stay residents with a hospital admission, 2008	19%	23	21%
Long-term care facility beds per FTE ombudsman, 2010	1,682	33	2,543
Nursing facilities visited by ombudsman at least quarterly, 2010	54%	40	76%

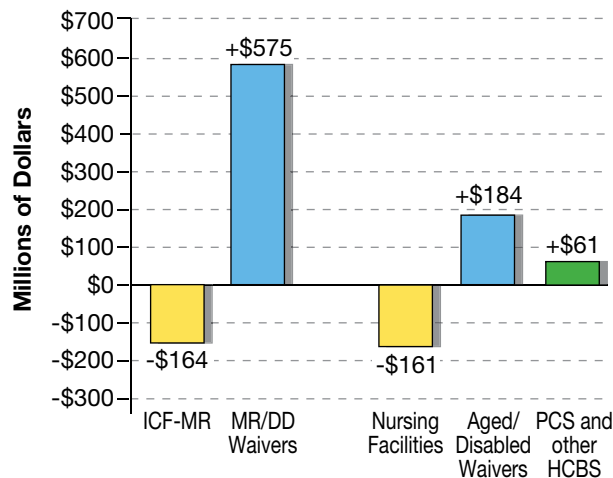
Note: the highest data value within each ranking is indicated by a rank of 1. For indicators in which both a total number and a ratio are given for the state value (percent of population, per person in the state, etc), the rank and U.S. values correspond to the ratio column.

\* These programs were originally administered under AoA. For more information on the Administration for Community Living (ACL), please see <http://www.hhs.gov/acl>.

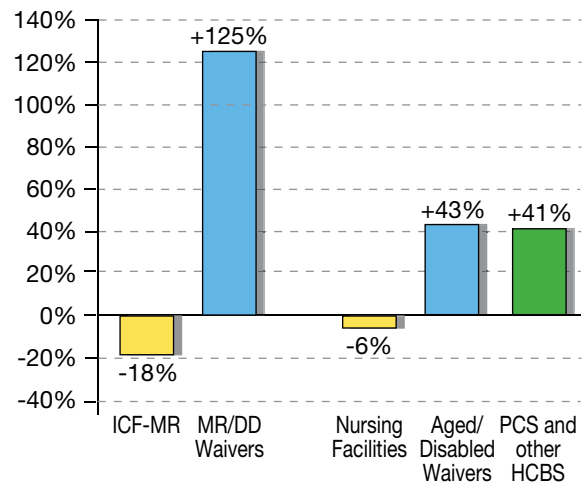
## TRENDS

<b>Medicaid HCBS Utilization</b>	<b>Year</b>	<b>State</b>	<b>Rank</b>	<b>U.S.</b>
Medicaid HCBS participants, older people and adults with physical disabilities (excluding home health)	2003	31,903		1,270,155
	2008	44,693		1,577,471
	% change	+40%	19	+24%
<b>Nursing Facility Residents</b>	<b>Year</b>	<b>State</b>	<b>Rank</b>	<b>U.S.</b>
Nursing facility residents	2005	82,209		1,460,185
	2010	79,658		1,408,886
	% change	-3%	24	-4%
<b>Long-Term Care Financing</b>	<b>Year</b>	<b>State</b>	<b>Rank</b>	<b>U.S.</b>
Total Medicaid spending (millions)	2004	\$11,516		\$285,710
	2009	\$14,080		\$368,330
	% change	+22%	39	+29%
Medicaid LTSS spending for older people and adults with physical disabilities (millions)	2004	\$3,299		\$62,811
	2009	\$3,382		\$80,181
	% change	+3%	45	+28%
Medicaid nursing facility spending (millions)	2004	\$2,726		\$45,842
	2009	\$2,565		\$51,403
	% change	-6%	45	+12%
Medicaid HCBS spending for older people and adults with physical disabilities (millions)	2004	\$573		\$16,969
	2009	\$818		\$28,778
	% change	+43%	33	+70%
Medicaid HCBS as a % of LTSS spending, for older people and adults with physical disabilities	2004	17%	33	27%
	2009	24%	32	36%
	change	+7%	21	+9%

**Change in Medicaid LTSS Spending, 2004–2009, by Service**



**Percent Change in Medicaid LTSS Spending, 2004–2009, by Service**



Note: The highest data value within each ranking is indicated by a rank of 1. For indicators in which both a total number and a ratio are given for the state value (percent of population, per person in the state, etc), the rank and U.S. values correspond to the ratio column.