



ACROSS THE STATES

PROFILES OF LONG-TERM SERVICES
AND SUPPORTS

MONTANA



by Ari Houser
Wendy Fox-Grage
Kathleen Ujvari

NINTH EDITION **2012**

INTRODUCTION

Across the States 2012: Profiles of Long-Term Services and Supports is the ninth edition of the AARP Public Policy Institute's state long-term services and supports reference report.

This short report provides key long-term services and supports information for a single state. Complete data for all states are contained in the full report and executive summary.

Published for the past 18 years, the *Across the States* series was developed to help inform policy discussions among public and private sector leaders in long-term services and supports throughout the United States. *Across the States 2012* presents comparable state-level and national data for more than 140 indicators, drawn together from a wide variety of sources into a single reference. This publication presents up-to-date data and is displayed in easy-to-use maps, graphics, tables, and state profiles.

Across the States 2012 comes in two volumes:

- A full report with an overview of key findings and trends, maps and graphs, and individual profiles for each state, the District of Columbia, and the nation as a whole. The full report provides a comprehensive picture of long-term services and supports in each state.
- An executive summary with an overview of key findings and trends, and ranking tables for each indicator, such as percentage of Medicaid long-term services and supports spending for older people and adults with physical disabilities going to home and community-based services. This permits readers to easily see variations among states.

Some of the indicators in *Across the States 2012* may be found in prior editions. Please exercise caution when making comparisons with information in earlier editions due to changes in the source or definition. Complete descriptions of all indicators, and how they may differ from previous editions, can be found in the Data Documentation section in the back of the full report. Data sources and descriptions of indicators are only found in the full report, not in the executive summary.

Additional indicators on health care spending, health status, and health care utilization for the age 50+ population can be found in another AARP Public Policy Institute report, *Quick Health Facts 2010: Selected State Data on Older Americans*.

Copies of *Across the States 2012* are available free of charge. To order, please call the AARP Public Policy Institute at (202) 434-3890 or email jgasaway@aarp.org.

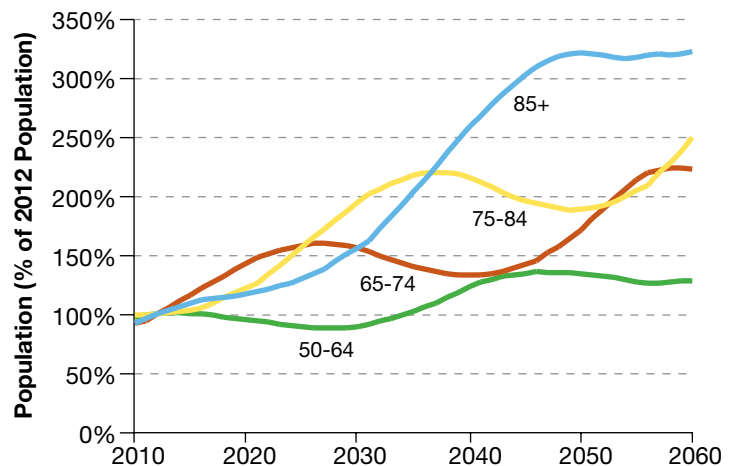
The full report and executive summary are also available on the web. The most recent edition of *Across the States* can be found at <http://www.aarp.org/acrossthestates>.

MONTANA

Population & Projections	Year	State Pop. (1,000s)	% of Total Population	Rank	U.S.	% Change from 2012	Rank	U.S.
All ages	2012	1,017		44	315,311			
	2032	1,326		43	376,660	+30%	8	+19%
	2050	1,511		43	434,447	+49%	8	+38%
Age 50-64	2012	217	21.3%	4	19.2%			
	2032	203	15.3%	39	16.4%	-6%	34	+2%
	2050	291	19.3%	4	16.6%	+34%	6	+19%
Age 65+	2012	154	15.2%	7	13.6%			
	2032	263	19.8%	27	19.8%	+70%	22	+74%
	2050	307	20.3%	25	20.4%	+99%	22	+107%
Age 65-74	2012	85	8.3%	6	7.4%			
	2032	126	9.5%	37	10.1%	+49%	39	+64%
	2050	145	9.6%	8	9.1%	+71%	17	+69%
Age 75-84	2012	47	4.6%	10	4.2%			
	2032	97	7.3%	12	6.8%	+106%	17	+94%
	2050	89	5.9%	44	6.6%	+89%	31	+116%
Age 85+	2012	23	2.2%	16	2.0%			
	2032	39	3.0%	20	2.9%	+73%	24	+69%
	2050	73	4.8%	22	4.8%	+222%	22	+224%

Older People of Color (%), 2010		
State	Rank	U.S.
5.0%	43	20.1%
Asian/Pacific Islander		
State	Rank	U.S.
0.5%	40	3.6%
Black		
State	Rank	U.S.
0.1%	48	8.5%
Hispanic		
State	Rank	U.S.
0.9%	40	6.9%

Projected Growth in the Older Population in Montana as a Percentage of 2012 Population, by Age Group



Note: the highest data value within each ranking is indicated by a rank of 1. For indicators in which both a total number and a ratio are given for the state value (percent of population, per person in the state, etc), the rank and U.S. values correspond to the ratio column.

POPULATION & CHARACTERISTICS

Living Arrangements	State	Rank	U.S.
Men per 100 women age 85+, 2010	54	9	48
People age 75+ living alone, 2010	38%	5	34%
People age 60+ with grandchildren in household, 2010	2.8%	42	5.5%
People age 60+ responsible for raising grandchildren, 2010	1.2%	36	1.6%
Percent of age 65+ households with someone under 18, 2010	3.5%	44	7.0%

Income & Poverty	State	Rank	U.S.
Median household income age 65+, 2010	\$32,423	32	\$34,381
At/below poverty level age 65+, 2010	7.0%	41	9.0%
At/below 250% of poverty level age 65+, 2010	41%	30	42%
Women age 75+ at/below poverty level, 2010	13.4%	16	12.2%
Women age 75+ at/below 250% of poverty level, 2010	58%	16	54%
Bachelor level education or higher age 65+, 2010	21%	21	21%

Disability Rates	Number (1,000s)	Percent	Rank	U.S.
People age 65+ with disabilities, 2010				
Self-care difficulty	9	6.6%	44	8.8%
Cognitive difficulty	11	7.7%	44	9.5%
Any disability	52	37%	21	37%
People age 18-64 with disabilities, 2010				
Self-care difficulty	9	1.4%	39	1.8%
Cognitive difficulty	25	4.1%	28	4.2%
Any disability	64	10.5%	23	10.0%

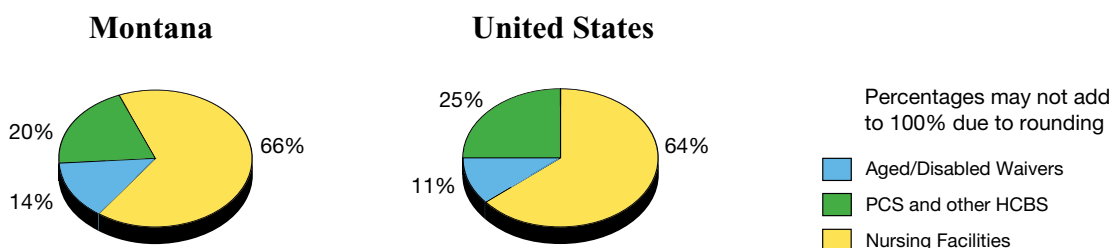
Family Caregivers	State	Per 1,000 Population	Rank	U.S.
Family caregivers, 2009	131,000	134	32	137
Economic value of family caregiving, 2009 (state in millions of \$)	\$1,390	\$1,430	35	\$1,460
Economic value per hour, 2009	\$11.16		28	\$11.16
Ratio of the economic value of family caregiving to Medicaid long-term care spending, 2009	4.1		25	3.8

Long-Term Care Insurance	State	Per 1,000 Age 40+	Rank	U.S.
Private long-term care insurance policies in effect, 2010	26,686	54	14	45

PUBLIC LTSS EXPENDITURES

Medicaid Expenditures	State	Rank	U.S.
Total Medicaid expenditures (millions), 2009	\$876	48	\$368,330
Federal Medicaid Assistance Percentage (FMAP), 2009	67.42%	12	
Medicaid home and community-based services (HCBS) as a % of long-term services and supports (LTSS) spending, for older people and adults with physical disabilities, 2009 *	34%	19	36%
Medicaid HCBS spending as a % of LTSS spending, for all populations, 2009 *	47%	15	44%

Medicaid Long-Term Services and Supports Spending for Older People and Adults with Physical Disabilities in Montana and the U.S., 2009



LTSS & Home Health Expenditures	Total (millions)	Per Person in the State	Rank	U.S.
Medicaid LTSS expenditures for older people and adults with physical disabilities, 2009	\$240	\$243	21	\$261
Nursing facilities	\$158	\$161	28	\$168
HCBS	\$81	\$83	18	\$94
Aged/disabled waiver services	\$33	\$34	25	\$29
Personal care services (PCS) **	\$36	\$36	15	\$45
Home health services	\$12	\$12	18	\$16
Other HCBS ***	\$0	\$0	22	\$4
Medicaid LTSS expenditures for all populations, 2009	\$353	\$358	29	\$413
Institutional services	\$186	\$189	33	\$232
HCBS	\$166	\$169	22	\$181
Waiver services (all populations)	\$118	\$120	27	\$114
Other HCBS (including PCS and home health)	\$48	\$49	16	\$68
State-funded HCBS expenditures for older people and adults with physical disabilities, 2009	NA	NA	NA	\$4.83

Note: the highest data value within each ranking is indicated by a rank of 1. For indicators in which both a total number and a ratio are given for the state value (percent of population, per person in the state, etc), the rank and U.S. values correspond to the ratio column.

* HCBS and LTSS include home health services for these indicators. This treatment is consistent with most earlier editions of Across the States, but differs from Across the States 2009, in which home health was categorized separately from LTSS.

** 15 states did not report any PCS spending in 2009; the lowest possible rank is 36. In 2008, 19 states did not report any PCS participants; the lowest possible rank is 32.

*** "Other HCBS" includes PACE, self-directed services authorized under Section 1915(j), and several other programs. Only 26 states have spending categorized as this type; the lowest rank for this indicator is 22.

Medicaid HCBS Participants By Type of Service	State	Per 1,000 Population	Rank	U.S.
Nursing facilities (NF), 2008	5,163	5.3	27	5.3
HCBS (older people and adults with PD), 2008	5,690	5.8	30	8.2
Aged/disabled waiver services	2,205	2.3	25	2.2
Personal care services (PCS) **	3,093	3.2	15	3.0
Home health services	392	0.4	47	3.0
Institutional services (NF and ICF-MR), 2008	5,228	5.4	28	5.6
HCBS (all populations), 2008	8,105	8.3	29	10.1
Waiver services (all populations)	4,620	4.7	25	4.1
Other HCBS (including PCS and home health)	3,485	3.6	28	6.0
Adults with disabilities self-directing services, 2011	4,832	4.95	5	2.43

Medicaid Participant LTSS Balance	State	Rank	U.S.
Medicaid aged/disabled waiver participants per 100 beneficiaries in nursing facilities, 2008	43	25	42
Medicaid HCBS beneficiaries as a % of LTSS users, for older people and adults with PD, 2008 *	52%	25	61%
Medicaid HCBS beneficiaries as a % of LTSS users, for all populations, 2008 *	61%	26	64%

Medicaid Expenditures Per Person Served	State	Rank	U.S.
Nursing facility services, 2008	\$29,937	25	\$29,533
HCBS expenditures for older people and adults with physical disabilities per person served, 2008 (excluding home health)	\$10,988	16	\$10,957
Aged/disabled waiver services	\$13,350	12	\$10,710
Personal care services **	\$9,304	15	\$11,142
Home health services	\$1,101	41	\$5,495
ICF-MR services, 2008	\$182,088	9	\$123,053
MR/DD waiver services, 2008	\$33,671	33	\$42,896

LTSS COSTS

Public & Private Payment Rates	State	Rank	U.S.
Medicaid payment per day for nursing facility care, 2011	\$174	23	\$178
Medicare payment per day for nursing facility care, 2010	\$402	29	\$398
Medicare reimbursement per home health visit, 2010	\$170	17	\$154
Private pay rate per day in nursing facility, 2011	\$183	32	\$193
Private pay rate per month in assisted living, 2011	\$3,100	30	\$3,261
Private pay daily rate for adult day care, 2011	\$70	14	\$60
Private pay hourly rate for home health aide, 2011	\$21	11	\$19

LTSS RESOURCES

HCBS Resources	State	Per 1,000 Age 65+	Rank	U.S.
Assisted living and residential care facilities, 2010	256	1.74	16	1.46
Assisted living and residential care units, 2010	5,246	36	11	31
Personal and home care aides, 2010	2,480	17	23	17
Median hourly wage, 2010	\$9.65		25	\$9.44
Home health aides, 2010	3,740	25	13	24
Median hourly wage, 2010	\$10.06		29	\$9.89
People receiving ACL congregate meals, 2009 *	24,835	172	2	42
People receiving ACL home delivered meals, 2009 *	7,100	49	6	22
Total ACL congregate and home delivered meal expenditures (total in millions of \$), 2009 *	\$10	\$70	10	\$36
Number of health maintenance tasks able to be delegated to LTSS workers (out of 16 tasks), 2011	0		41	

Nursing Facility Resources & Utilization	State	Per 1,000 Age 65+	Rank	U.S.
Total nursing facilities, 2010	89	0.60	9	0.40
Nursing facility beds, 2010	7,010	48	18	42
Nursing facility residents, 2010	4,928	33	30	35
Nursing facility occupancy rate, 2010	70%		47	83%
Direct care nursing hours per resident day, 2010	4.1		9	3.8
RN hours per day, 2010	0.88		6	0.64
Nursing facility staffing turnover, 2010	51%		11	40%

Nursing Facility Resident Characteristics	State	Rank	U.S.
Residents with dementia, 2010	43%	43	46%
Nursing facility residents with low care needs, 2008	20%	17	17%
Residents with Medicaid as primary payer, 2010	56%	43	63%
Residents with Medicare as primary payer, 2010	12%	34	14%
Residents with “other” as primary payer, 2010	32%	7	22%

Quality & Oversight of Nursing Facilities	State	Rank	U.S.
Residents with physical restraints, 2008	2%	35	4%
High risk residents with pressure sores, 2008	8%	42	12%
Long-stay residents with a hospital admission, 2008	13%	39	21%
Long-term care facility beds per FTE ombudsman, 2010	799	50	2,543
Nursing facilities visited by ombudsman at least quarterly, 2010	100%	1	76%

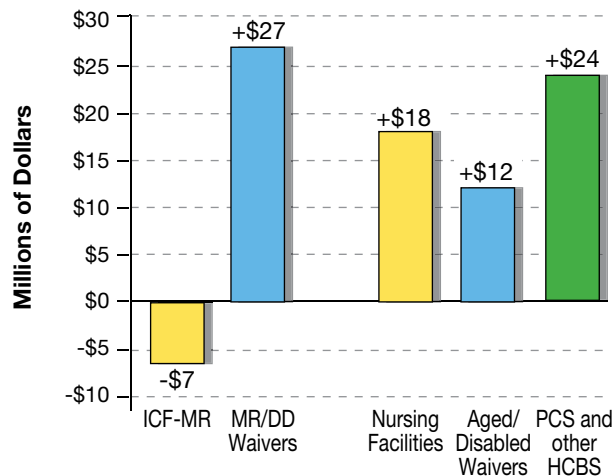
Note: the highest data value within each ranking is indicated by a rank of 1. For indicators in which both a total number and a ratio are given for the state value (percent of population, per person in the state, etc), the rank and U.S. values correspond to the ratio column.

* These programs were originally administered under AoA. For more information on the Administration for Community Living (ACL), please see <http://www.hhs.gov/acl>.

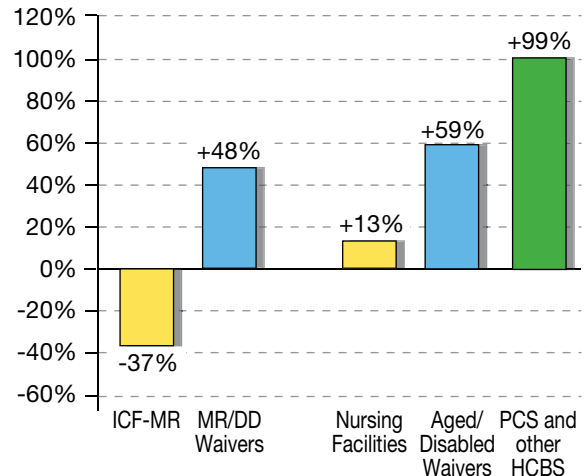
TRENDS

Medicaid HCBS Utilization	Year	State	Rank	U.S.
Medicaid HCBS participants, older people and adults with physical disabilities (excluding home health)	2003	4,292		1,270,155
	2008	5,298		1,577,471
	% change	+23%	28	+24%
Nursing Facility Residents	Year	State	Rank	U.S.
Nursing facility residents	2005	5,370		1,460,185
	2010	4,928		1,408,886
	% change	-8%	42	-4%
Long-Term Care Financing	Year	State	Rank	U.S.
Total Medicaid spending (millions)	2004	\$653		\$285,710
	2009	\$876		\$368,330
	% change	+34%	20	+29%
Medicaid LTSS spending for older people and adults with physical disabilities (millions)	2004	\$185		\$62,811
	2009	\$240		\$80,181
	% change	+29%	16	+28%
Medicaid nursing facility spending (millions)	2004	\$140		\$45,842
	2009	\$158		\$51,403
	% change	+13%	26	+12%
Medicaid HCBS spending for older people and adults with physical disabilities (millions)	2004	\$45		\$16,969
	2009	\$81		\$28,778
	% change	+80%	18	+70%
Medicaid HCBS as a % of LTSS spending, for older people and adults with physical disabilities	2004	24%	17	27%
	2009	34%	19	36%
	change	+10%	12	+9%

Change in Medicaid LTSS Spending, 2004–2009, by Service



Percent Change in Medicaid LTSS Spending, 2004–2009, by Service



Note: The highest data value within each ranking is indicated by a rank of 1. For indicators in which both a total number and a ratio are given for the state value (percent of population, per person in the state, etc), the rank and U.S. values correspond to the ratio column.