



ACROSS THE STATES

PROFILES OF LONG-TERM SERVICES
AND SUPPORTS

MISSOURI



by Ari Houser
Wendy Fox-Grage
Kathleen Ujvari

NINTH EDITION **2012**

INTRODUCTION

Across the States 2012: Profiles of Long-Term Services and Supports is the ninth edition of the AARP Public Policy Institute's state long-term services and supports reference report.

This short report provides key long-term services and supports information for a single state. Complete data for all states are contained in the full report and executive summary.

Published for the past 18 years, the *Across the States* series was developed to help inform policy discussions among public and private sector leaders in long-term services and supports throughout the United States. *Across the States 2012* presents comparable state-level and national data for more than 140 indicators, drawn together from a wide variety of sources into a single reference. This publication presents up-to-date data and is displayed in easy-to-use maps, graphics, tables, and state profiles.

Across the States 2012 comes in two volumes:

- A full report with an overview of key findings and trends, maps and graphs, and individual profiles for each state, the District of Columbia, and the nation as a whole. The full report provides a comprehensive picture of long-term services and supports in each state.
- An executive summary with an overview of key findings and trends, and ranking tables for each indicator, such as percentage of Medicaid long-term services and supports spending for older people and adults with physical disabilities going to home and community-based services. This permits readers to easily see variations among states.

Some of the indicators in *Across the States 2012* may be found in prior editions. Please exercise caution when making comparisons with information in earlier editions due to changes in the source or definition. Complete descriptions of all indicators, and how they may differ from previous editions, can be found in the Data Documentation section in the back of the full report. Data sources and descriptions of indicators are only found in the full report, not in the executive summary.

Additional indicators on health care spending, health status, and health care utilization for the age 50+ population can be found in another AARP Public Policy Institute report, *Quick Health Facts 2010: Selected State Data on Older Americans*.

Copies of *Across the States 2012* are available free of charge. To order, please call the AARP Public Policy Institute at (202) 434-3890 or email jgasaway@aarp.org.

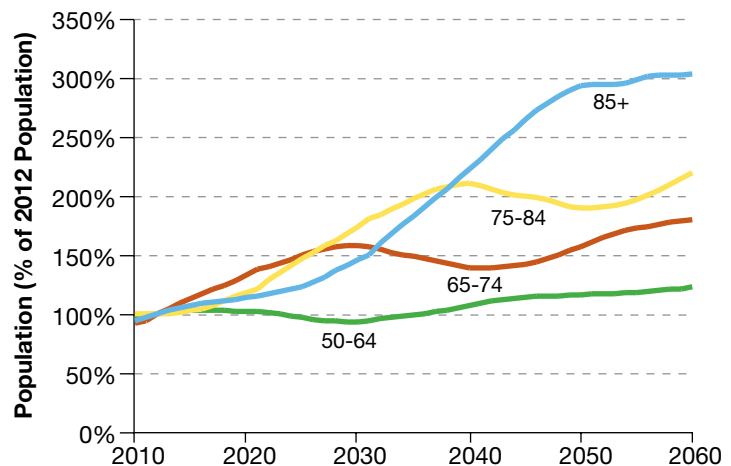
The full report and executive summary are also available on the web. The most recent edition of *Across the States* can be found at <http://www.aarp.org/acrossthestates>.

MISSOURI

| Population & Projections | Year | State Pop. (1,000s) | % of Total Population | Rank | U.S. | % Change from 2012 | Rank | U.S. |
|--------------------------|------|---------------------|-----------------------|------|---------|--------------------|------|-------|
| All ages | 2012 | 6,128 | | 18 | 315,311 | | | |
| | 2032 | 7,158 | | 18 | 376,660 | +17% | 32 | +19% |
| | 2050 | 8,189 | | 18 | 434,447 | +34% | 32 | +38% |
| Age 50-64 | 2012 | 1,209 | 19.7% | 23 | 19.2% | | | |
| | 2032 | 1,158 | 16.2% | 27 | 16.4% | -4% | 28 | +2% |
| | 2050 | 1,405 | 17.2% | 22 | 16.6% | +16% | 29 | +19% |
| Age 65+ | 2012 | 883 | 14.4% | 20 | 13.6% | | | |
| | 2032 | 1,453 | 20.3% | 23 | 19.8% | +65% | 31 | +74% |
| | 2050 | 1,661 | 20.3% | 25 | 20.4% | +88% | 31 | +107% |
| Age 65-74 | 2012 | 477 | 7.8% | 18 | 7.4% | | | |
| | 2032 | 738 | 10.3% | 19 | 10.1% | +55% | 29 | +64% |
| | 2050 | 751 | 9.2% | 20 | 9.1% | +57% | 29 | +69% |
| Age 75-84 | 2012 | 272 | 4.4% | 18 | 4.2% | | | |
| | 2032 | 502 | 7.0% | 21 | 6.8% | +84% | 32 | +94% |
| | 2050 | 518 | 6.3% | 30 | 6.6% | +90% | 29 | +116% |
| Age 85+ | 2012 | 133 | 2.2% | 16 | 2.0% | | | |
| | 2032 | 213 | 3.0% | 20 | 2.9% | +60% | 31 | +69% |
| | 2050 | 392 | 4.8% | 22 | 4.8% | +194% | 30 | +224% |

| Older People of Color (%), 2010 | | |
|---------------------------------|------|-------|
| State | Rank | U.S. |
| 10.2% | 31 | 20.1% |
| Asian/Pacific Islander | | |
| State | Rank | U.S. |
| 0.8% | 33 | 3.6% |
| Black | | |
| State | Rank | U.S. |
| 7.4% | 20 | 8.5% |
| Hispanic | | |
| State | Rank | U.S. |
| 1.1% | 36 | 6.9% |

Projected Growth in the Older Population in Missouri as a Percentage of 2012 Population, by Age Group



Note: the highest data value within each ranking is indicated by a rank of 1. For indicators in which both a total number and a ratio are given for the state value (percent of population, per person in the state, etc), the rank and U.S. values correspond to the ratio column.

POPULATION & CHARACTERISTICS

| Living Arrangements | State | Rank | U.S. |
|--|--------------|-------------|-------------|
| Men per 100 women age 85+, 2010 | 46 | 31 | 48 |
| People age 75+ living alone, 2010 | 36% | 11 | 34% |
| People age 60+ with grandchildren in household, 2010 | 3.9% | 32 | 5.5% |
| People age 60+ responsible for raising grandchildren, 2010 | 1.4% | 26 | 1.6% |
| Percent of age 65+ households with someone under 18, 2010 | 4.5% | 38 | 7.0% |

| Income & Poverty | State | Rank | U.S. |
|--|--------------|-------------|-------------|
| Median household income age 65+, 2010 | \$31,324 | 41 | \$34,381 |
| At/below poverty level age 65+, 2010 | 9.1% | 21 | 9.0% |
| At/below 250% of poverty level age 65+, 2010 | 45% | 12 | 42% |
| Women age 75+ at/below poverty level, 2010 | 13.2% | 18 | 12.2% |
| Women age 75+ at/below 250% of poverty level, 2010 | 59% | 13 | 54% |
| Bachelor level education or higher age 65+, 2010 | 17% | 38 | 21% |

| Disability Rates | Number (1,000s) | Percent | Rank | U.S. |
|--|----------------------------|----------------|-------------|-------------|
| People age 65+ with disabilities, 2010 | | | | |
| Self-care difficulty | 68 | 8.4% | 20 | 8.8% |
| Cognitive difficulty | 77 | 9.5% | 21 | 9.5% |
| Any disability | 311 | 39% | 12 | 37% |
| People age 18-64 with disabilities, 2010 | | | | |
| Self-care difficulty | 88 | 2.4% | 7 | 1.8% |
| Cognitive difficulty | 186 | 5.1% | 13 | 4.2% |
| Any disability | 440 | 12.0% | 11 | 10.0% |

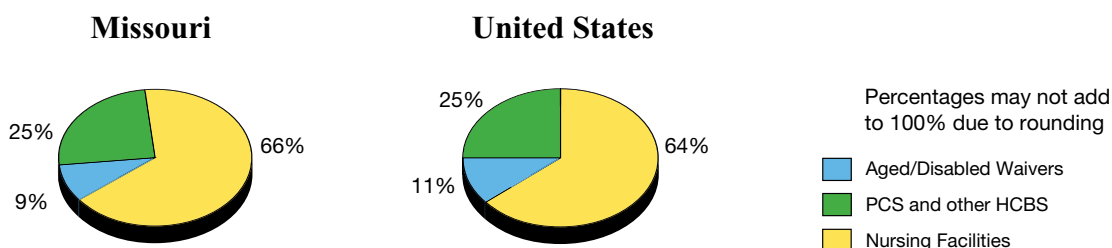
| Family Caregivers | State | Per 1,000 Population | Rank | U.S. |
|---|--------------|---------------------------------|-------------|-------------|
| Family caregivers, 2009 | 865,000 | 144 | 16 | 137 |
| Economic value of family caregiving, 2009 (state in millions of \$) | \$8,900 | \$1,480 | 29 | \$1,460 |
| Economic value per hour, 2009 | \$10.70 | | 32 | \$11.16 |
| Ratio of the economic value of family caregiving to Medicaid long-term care spending, 2009 | 4.7 | | 19 | 3.8 |

| Long-Term Care Insurance | State | Per 1,000 Age 40+ | Rank | U.S. |
|---|--------------|------------------------------|-------------|-------------|
| Private long-term care insurance policies in effect, 2010 | 155,771 | 55 | 12 | 45 |

PUBLIC LTSS EXPENDITURES

| Medicaid Expenditures | State | Rank | U.S. |
|---|---------|------|-----------|
| Total Medicaid expenditures (millions), 2009 | \$7,676 | 13 | \$368,330 |
| Federal Medicaid Assistance Percentage (FMAP), 2009 | 64.51% | 19 | |
| Medicaid home and community-based services (HCBS) as a % of long-term services and supports (LTSS) spending, for older people and adults with physical disabilities, 2009 * | 34% | 19 | 36% |
| Medicaid HCBS spending as a % of LTSS spending, for all populations, 2009 * | 41% | 29 | 44% |

Medicaid Long-Term Services and Supports Spending for Older People and Adults with Physical Disabilities in Missouri and the U.S., 2009



| LTSS & Home Health Expenditures | Total (millions) | Per Person in the State | Rank | U.S. |
|---|------------------|-------------------------|------|--------|
| Medicaid LTSS expenditures for older people and adults with physical disabilities, 2009 | \$1,311 | \$220 | 30 | \$261 |
| Nursing facilities | \$869 | \$146 | 32 | \$168 |
| HCBS | \$442 | \$74 | 22 | \$94 |
| Aged/disabled waiver services | \$113 | \$19 | 36 | \$29 |
| Personal care services (PCS) ** | \$318 | \$53 | 11 | \$45 |
| Home health services | \$5 | \$1 | 44 | \$16 |
| Other HCBS *** | \$5 | \$1 | 15 | \$4 |
| Medicaid LTSS expenditures for all populations, 2009 | \$2,135 | \$358 | 29 | \$413 |
| Institutional services | \$1,265 | \$212 | 26 | \$232 |
| HCBS | \$870 | \$146 | 29 | \$181 |
| Waiver services (all populations) | \$541 | \$91 | 35 | \$114 |
| Other HCBS (including PCS and home health) | \$329 | \$55 | 15 | \$68 |
| State-funded HCBS expenditures for older people and adults with physical disabilities, 2009 | \$9 | \$1.43 | 35 | \$4.83 |

Note: the highest data value within each ranking is indicated by a rank of 1. For indicators in which both a total number and a ratio are given for the state value (percent of population, per person in the state, etc), the rank and U.S. values correspond to the ratio column.

* HCBS and LTSS include home health services for these indicators. This treatment is consistent with most earlier editions of Across the States, but differs from Across the States 2009, in which home health was categorized separately from LTSS.

** 15 states did not report any PCS spending in 2009; the lowest possible rank is 36. In 2008, 19 states did not report any PCS participants; the lowest possible rank is 32.

*** "Other HCBS" includes PACE, self-directed services authorized under Section 1915(j), and several other programs. Only 26 states have spending categorized as this type; the lowest rank for this indicator is 22.

| Medicaid HCBS Participants By Type of Service | State | Per 1,000 Population | Rank | U.S. |
|--|--------------|-----------------------------|-------------|-------------|
| Nursing facilities (NF), 2008 | 38,466 | 6.5 | 12 | 5.3 |
| HCBS (older people and adults with PD), 2008 | 75,096 | 12.7 | 5 | 8.2 |
| Aged/disabled waiver services | 19,620 | 3.3 | 18 | 2.2 |
| Personal care services (PCS) ** | 49,333 | 8.3 | 2 | 3.0 |
| Home health services | 6,143 | 1.0 | 37 | 3.0 |
| Institutional services (NF and ICF-MR), 2008 | 39,427 | 6.7 | 15 | 5.6 |
| HCBS (all populations), 2008 | 84,110 | 14.2 | 6 | 10.1 |
| Waiver services (all populations) | 28,634 | 4.8 | 23 | 4.1 |
| Other HCBS (including PCS and home health) | 55,476 | 9.4 | 8 | 6.0 |
| Adults with disabilities self-directing services, 2011 | 15,270 | 2.58 | 9 | 2.43 |

| Medicaid Participant LTSS Balance | State | Rank | U.S. |
|---|--------------|-------------|-------------|
| Medicaid aged/disabled waiver participants per 100 beneficiaries in nursing facilities, 2008 | 51 | 21 | 42 |
| Medicaid HCBS beneficiaries as a % of LTSS users, for older people and adults with PD, 2008 * | 66% | 12 | 61% |
| Medicaid HCBS beneficiaries as a % of LTSS users, for all populations, 2008 * | 68% | 14 | 64% |

| Medicaid Expenditures Per Person Served | State | Rank | U.S. |
|--|--------------|-------------|-------------|
| Nursing facility services, 2008 | \$21,832 | 49 | \$29,533 |
| HCBS expenditures for older people and adults with physical disabilities per person served, 2008 (excluding home health) | \$5,868 | 40 | \$10,957 |
| Aged/disabled waiver services | \$5,148 | 45 | \$10,710 |
| Personal care services ** | \$6,154 | 24 | \$11,142 |
| Home health services | \$969 | 44 | \$5,495 |
| ICF-MR services, 2008 | \$111,027 | 25 | \$123,053 |
| MR/DD waiver services, 2008 | \$44,194 | 21 | \$42,896 |

LTSS COSTS

| Public & Private Payment Rates | State | Rank | U.S. |
|--|--------------|-------------|-------------|
| Medicaid payment per day for nursing facility care, 2011 | \$133 | 38 | \$178 |
| Medicare payment per day for nursing facility care, 2010 | \$347 | 45 | \$398 |
| Medicare reimbursement per home health visit, 2010 | \$168 | 18 | \$154 |
| Private pay rate per day in nursing facility, 2011 | \$134 | 49 | \$193 |
| Private pay rate per month in assisted living, 2011 | \$2,420 | 50 | \$3,261 |
| Private pay daily rate for adult day care, 2011 | \$70 | 14 | \$60 |
| Private pay hourly rate for home health aide, 2011 | \$19 | 31 | \$19 |

LTSS RESOURCES

| HCBS Resources | State | Per 1,000 Age 65+ | Rank | U.S. |
|---|--------------|------------------------------|-------------|-------------|
| Assisted living and residential care facilities, 2010 | 603 | 0.72 | 33 | 1.46 |
| Assisted living and residential care units, 2010 | 21,333 | 25 | 31 | 31 |
| Personal and home care aides, 2010 | 17,250 | 21 | 13 | 17 |
| Median hourly wage, 2010 | \$8.75 | | 40 | \$9.44 |
| Home health aides, 2010 | 13,440 | 16 | 34 | 24 |
| Median hourly wage, 2010 | \$9.15 | | 41 | \$9.89 |
| People receiving ACL congregate meals, 2009 * | 78,108 | 94 | 10 | 42 |
| People receiving ACL home delivered meals, 2009 * | 36,949 | 45 | 9 | 22 |
| Total ACL congregate and home delivered meal expenditures (total in millions of \$), 2009 * | \$44 | \$53 | 13 | \$36 |
| Number of health maintenance tasks able to be delegated to LTSS workers (out of 16 tasks), 2011 | 16 | | 1 | |

| Nursing Facility Resources & Utilization | State | Per 1,000 Age 65+ | Rank | U.S. |
|---|--------------|------------------------------|-------------|-------------|
| Total nursing facilities, 2010 | 526 | 0.63 | 7 | 0.40 |
| Nursing facility beds, 2010 | 53,600 | 64 | 4 | 42 |
| Nursing facility residents, 2010 | 38,504 | 46 | 12 | 35 |
| Nursing facility occupancy rate, 2010 | 72% | | 43 | 83% |
| Direct care nursing hours per resident day, 2010 | 3.7 | | 36 | 3.8 |
| RN hours per day, 2010 | 0.49 | | 46 | 0.64 |
| Nursing facility staffing turnover, 2010 | 67% | | 4 | 40% |

| Nursing Facility Resident Characteristics | State | Rank | U.S. |
|--|--------------|-------------|-------------|
| Residents with dementia, 2010 | 44% | 37 | 46% |
| Nursing facility residents with low care needs, 2008 | 22% | 8 | 17% |
| Residents with Medicaid as primary payer, 2010 | 61% | 33 | 63% |
| Residents with Medicare as primary payer, 2010 | 12% | 34 | 14% |
| Residents with "other" as primary payer, 2010 | 27% | 9 | 22% |

| Quality & Oversight of Nursing Facilities | State | Rank | U.S. |
|--|--------------|-------------|-------------|
| Residents with physical restraints, 2008 | 4% | 15 | 4% |
| High risk residents with pressure sores, 2008 | 11% | 22 | 12% |
| Long-stay residents with a hospital admission, 2008 | 22% | 12 | 21% |
| Long-term care facility beds per FTE ombudsman, 2010 | 4,246 | 8 | 2,543 |
| Nursing facilities visited by ombudsman at least quarterly, 2010 | 56% | 39 | 76% |

Note: the highest data value within each ranking is indicated by a rank of 1. For indicators in which both a total number and a ratio are given for the state value (percent of population, per person in the state, etc), the rank and U.S. values correspond to the ratio column.

* These programs were originally administered under AoA. For more information on the Administration for Community Living (ACL), please see <http://www.hhs.gov/acl>.

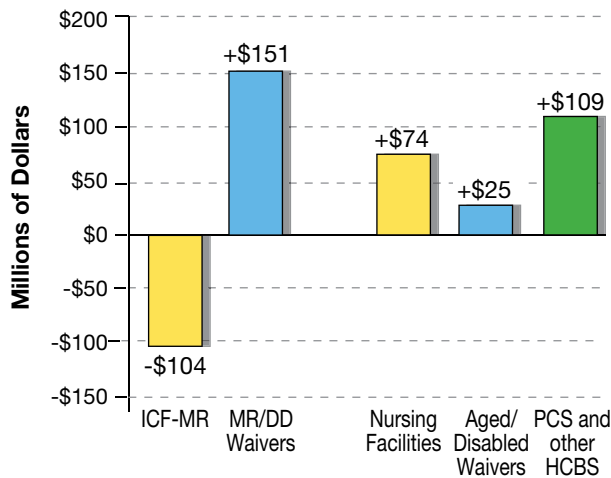
TRENDS

| Medicaid HCBS Utilization | Year | State | Rank | U.S. |
|--|-------------|--------------|-------------|-------------|
| Medicaid HCBS participants, older people and adults with physical disabilities (excluding home health) | 2003 | 68,700 | | 1,270,155 |
| | 2008 | 68,953 | | 1,577,471 |
| | % change | +0% | 42 | +24% |

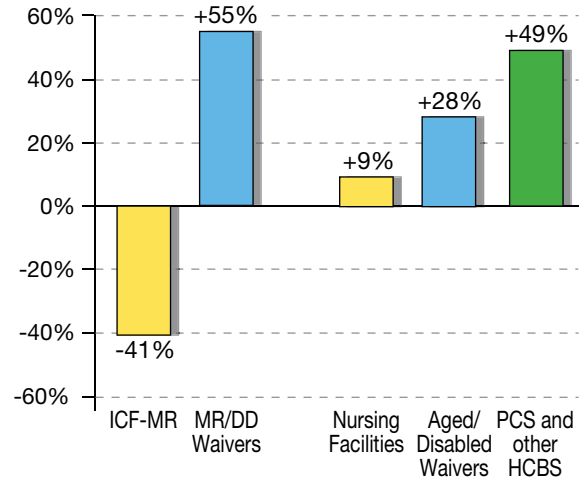
| Nursing Facility Residents | Year | State | Rank | U.S. |
|-----------------------------------|-------------|--------------|-------------|-------------|
| Nursing facility residents | 2005 | 38,443 | | 1,460,185 |
| | 2010 | 38,504 | | 1,408,886 |
| | % change | +0% | 8 | -4% |

| Long-Term Care Financing | Year | State | Rank | U.S. |
|---|-------------|--------------|-------------|-------------|
| Total Medicaid spending (millions) | 2004 | \$6,155 | | \$285,710 |
| | 2009 | \$7,676 | | \$368,330 |
| | % change | +25% | 34 | +29% |
| Medicaid LTSS spending for older people and adults with physical disabilities (millions) | 2004 | \$1,103 | | \$62,811 |
| | 2009 | \$1,311 | | \$80,181 |
| | % change | +19% | 35 | +28% |
| Medicaid nursing facility spending (millions) | 2004 | \$795 | | \$45,842 |
| | 2009 | \$869 | | \$51,403 |
| | % change | +9% | 32 | +12% |
| Medicaid HCBS spending for older people and adults with physical disabilities (millions) | 2004 | \$308 | | \$16,969 |
| | 2009 | \$442 | | \$28,778 |
| | % change | +43% | 33 | +70% |
| Medicaid HCBS as a % of LTSS spending, for older people and adults with physical disabilities | 2004 | 28% | 14 | 27% |
| | 2009 | 34% | 19 | 36% |
| | change | +6% | 25 | +9% |

Change in Medicaid LTSS Spending, 2004–2009, by Service



Percent Change in Medicaid LTSS Spending, 2004–2009, by Service



Note: The highest data value within each ranking is indicated by a rank of 1. For indicators in which both a total number and a ratio are given for the state value (percent of population, per person in the state, etc), the rank and U.S. values correspond to the ratio column.