



ACROSS THE STATES

PROFILES OF LONG-TERM SERVICES
AND SUPPORTS

COLORADO



by Ari Houser
Wendy Fox-Grage
Kathleen Ujvari

NINTH EDITION **2012**

INTRODUCTION

Across the States 2012: Profiles of Long-Term Services and Supports is the ninth edition of the AARP Public Policy Institute's state long-term services and supports reference report.

This short report provides key long-term services and supports information for a single state. Complete data for all states are contained in the full report and executive summary.

Published for the past 18 years, the *Across the States* series was developed to help inform policy discussions among public and private sector leaders in long-term services and supports throughout the United States. *Across the States 2012* presents comparable state-level and national data for more than 140 indicators, drawn together from a wide variety of sources into a single reference. This publication presents up-to-date data and is displayed in easy-to-use maps, graphics, tables, and state profiles.

Across the States 2012 comes in two volumes:

- A full report with an overview of key findings and trends, maps and graphs, and individual profiles for each state, the District of Columbia, and the nation as a whole. The full report provides a comprehensive picture of long-term services and supports in each state.
- An executive summary with an overview of key findings and trends, and ranking tables for each indicator, such as percentage of Medicaid long-term services and supports spending for older people and adults with physical disabilities going to home and community-based services. This permits readers to easily see variations among states.

Some of the indicators in *Across the States 2012* may be found in prior editions. Please exercise caution when making comparisons with information in earlier editions due to changes in the source or definition. Complete descriptions of all indicators, and how they may differ from previous editions, can be found in the Data Documentation section in the back of the full report. Data sources and descriptions of indicators are only found in the full report, not in the executive summary.

Additional indicators on health care spending, health status, and health care utilization for the age 50+ population can be found in another AARP Public Policy Institute report, *Quick Health Facts 2010: Selected State Data on Older Americans*.

Copies of *Across the States 2012* are available free of charge. To order, please call the AARP Public Policy Institute at (202) 434-3890 or email jgasaway@aarp.org.

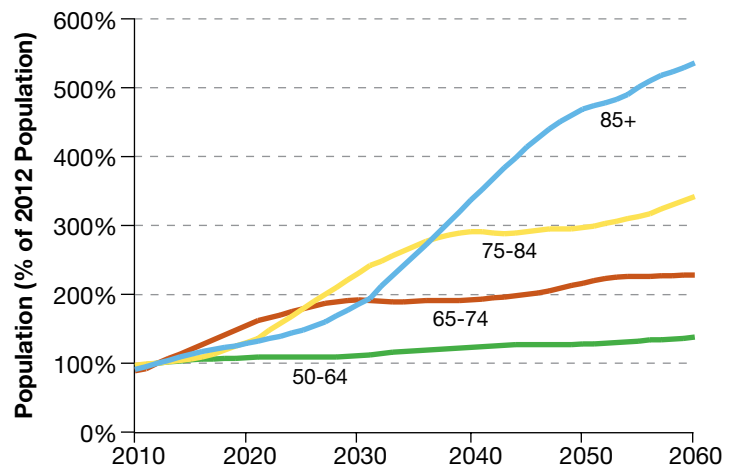
The full report and executive summary are also available on the web. The most recent edition of *Across the States* can be found at <http://www.aarp.org/acrossthestates>.

COLORADO

Population & Projections	Year	State Pop. (1,000s)	% of Total Population	Rank	U.S.	% Change from 2012	Rank	U.S.
All ages	2012	5,252		22	315,311			
	2032	6,890		20	376,660	+31%	6	+19%
	2050	8,042		19	434,447	+53%	5	+38%
Age 50-64	2012	1,021	19.4%	27	19.2%			
	2032	1,165	16.9%	8	16.4%	+14%	4	+2%
	2050	1,303	16.2%	38	16.6%	+28%	11	+19%
Age 65+	2012	604	11.5%	47	13.6%			
	2032	1,268	18.4%	43	19.8%	+110%	2	+74%
	2050	1,649	20.5%	20	20.4%	+173%	5	+107%
Age 65-74	2012	348	6.6%	46	7.4%			
	2032	661	9.6%	36	10.1%	+90%	2	+64%
	2050	752	9.4%	13	9.1%	+116%	4	+69%
Age 75-84	2012	177	3.4%	46	4.2%			
	2032	439	6.4%	41	6.8%	+148%	3	+94%
	2050	526	6.5%	22	6.6%	+197%	5	+116%
Age 85+	2012	79	1.5%	46	2.0%			
	2032	168	2.4%	46	2.9%	+112%	4	+69%
	2050	371	4.6%	34	4.8%	+369%	4	+224%

Older People of Color (%), 2010		
State	Rank	U.S.
15.5%	22	20.1%
Asian/Pacific Islander		
State	Rank	U.S.
1.8%	17	3.6%
Black		
State	Rank	U.S.
2.6%	31	8.5%
Hispanic		
State	Rank	U.S.
9.9%	6	6.9%

Projected Growth in the Older Population in Colorado as a Percentage of 2012 Population, by Age Group



Note: the highest data value within each ranking is indicated by a rank of 1. For indicators in which both a total number and a ratio are given for the state value (percent of population, per person in the state, etc), the rank and U.S. values correspond to the ratio column.

POPULATION & CHARACTERISTICS

Living Arrangements	State	Rank	U.S.
Men per 100 women age 85+, 2010	50	14	48
People age 75+ living alone, 2010	35%	17	34%
People age 60+ with grandchildren in household, 2010	4.8%	23	5.5%
People age 60+ responsible for raising grandchildren, 2010	1.6%	24	1.6%
Percent of age 65+ households with someone under 18, 2010	5.4%	29	7.0%

Income & Poverty	State	Rank	U.S.
Median household income age 65+, 2010	\$37,684	13	\$34,381
At/below poverty level age 65+, 2010	8.1%	26	9.0%
At/below 250% of poverty level age 65+, 2010	37%	40	42%
Women age 75+ at/below poverty level, 2010	11.1%	30	12.2%
Women age 75+ at/below 250% of poverty level, 2010	51%	38	54%
Bachelor level education or higher age 65+, 2010	30%	2	21%

Disability Rates	Number (1,000s)	Percent	Rank	U.S.
People age 65+ with disabilities, 2010				
Self-care difficulty	38	7.1%	36	8.8%
Cognitive difficulty	42	7.9%	40	9.5%
Any disability	185	35%	31	37%
People age 18-64 with disabilities, 2010				
Self-care difficulty	43	1.4%	39	1.8%
Cognitive difficulty	114	3.6%	39	4.2%
Any disability	273	8.5%	40	10.0%

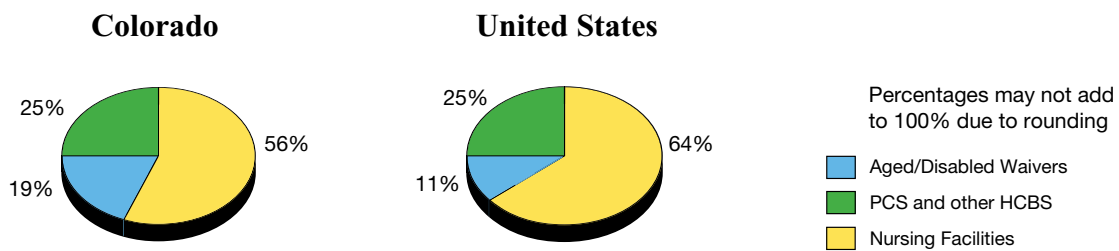
Family Caregivers	State	Per 1,000 Population	Rank	U.S.
Family caregivers, 2009	576,000	115	47	137
Economic value of family caregiving, 2009 (state in millions of \$)	\$6,600	\$1,310	41	\$1,460
Economic value per hour, 2009	\$11.93		13	\$11.16
Ratio of the economic value of family caregiving to Medicaid long-term care spending, 2009	4.8		12	3.8

Long-Term Care Insurance	State	Per 1,000 Age 40+	Rank	U.S.
Private long-term care insurance policies in effect, 2010	122,775	55	12	45

PUBLIC LTSS EXPENDITURES

Medicaid Expenditures	State	Rank	U.S.
Total Medicaid expenditures (millions), 2009	\$3,571	30	\$368,330
Federal Medicaid Assistance Percentage (FMAP), 2009	50.00%	41	
Medicaid home and community-based services (HCBS) as a % of long-term services and supports (LTSS) spending, for older people and adults with physical disabilities, 2009 *	44%	9	36%
Medicaid HCBS spending as a % of LTSS spending, for all populations, 2009 *	58%	8	44%

Medicaid Long-Term Services and Supports Spending for Older People and Adults with Physical Disabilities in Colorado and the U.S., 2009



LTSS & Home Health Expenditures	Total (millions)	Per Person in the State	Rank	U.S.
Medicaid LTSS expenditures for older people and adults with physical disabilities, 2009	\$973	\$196	39	\$261
Nursing facilities	\$549	\$110	42	\$168
HCBS	\$424	\$85	15	\$94
Aged/disabled waiver services	\$182	\$37	20	\$29
Personal care services (PCS) **	NA	NA	NA	\$45
Home health services	\$176	\$35	4	\$16
Other HCBS ***	\$67	\$13	4	\$4
Medicaid LTSS expenditures for all populations, 2009	\$1,374	\$276	41	\$413
Institutional services	\$576	\$116	46	\$232
HCBS	\$798	\$160	27	\$181
Waiver services (all populations)	\$556	\$112	28	\$114
Other HCBS (including PCS and home health)	\$242	\$49	16	\$68
State-funded HCBS expenditures for older people and adults with physical disabilities, 2009	\$22	\$4.42	19	\$4.83

Note: the highest data value within each ranking is indicated by a rank of 1. For indicators in which both a total number and a ratio are given for the state value (percent of population, per person in the state, etc), the rank and U.S. values correspond to the ratio column.

* HCBS and LTSS include home health services for these indicators. This treatment is consistent with most earlier editions of Across the States, but differs from Across the States 2009, in which home health was categorized separately from LTSS.

** 15 states did not report any PCS spending in 2009; the lowest possible rank is 36. In 2008, 19 states did not report any PCS participants; the lowest possible rank is 32.

*** "Other HCBS" includes PACE, self-directed services authorized under Section 1915(j), and several other programs. Only 26 states have spending categorized as this type; the lowest rank for this indicator is 22.

Medicaid HCBS Participants By Type of Service	State	Per 1,000 Population	Rank	U.S.
Nursing facilities (NF), 2008	16,320	3.3	44	5.3
HCBS (older people and adults with PD), 2008	28,454	5.8	30	8.2
Aged/disabled waiver services	17,490	3.6	13	2.2
Personal care services (PCS) **	NA	NA	NA	3.0
Home health services	10,964	2.2	19	3.0
Institutional services (NF and ICF-MR), 2008	16,476	3.4	44	5.6
HCBS (all populations), 2008	40,455	8.3	29	10.1
Waiver services (all populations)	29,491	6.0	13	4.1
Other HCBS (including PCS and home health)	10,964	2.2	34	6.0
Adults with disabilities self-directing services, 2011	19,550	4.00	6	2.43

Medicaid Participant LTSS Balance	State	Rank	U.S.
Medicaid aged/disabled waiver participants per 100 beneficiaries in nursing facilities, 2008	107	7	42
Medicaid HCBS beneficiaries as a % of LTSS users, for older people and adults with PD, 2008 *	64%	14	61%
Medicaid HCBS beneficiaries as a % of LTSS users, for all populations, 2008 *	71%	11	64%

Medicaid Expenditures Per Person Served	State	Rank	U.S.
Nursing facility services, 2008	\$30,886	20	\$29,533
HCBS expenditures for older people and adults with physical disabilities per person served, 2008 (excluding home health)	\$7,895	33	\$10,957
Aged/disabled waiver services	\$7,895	35	\$10,710
Personal care services **	NA	NA	\$11,142
Home health services	\$8,086	5	\$5,495
ICF-MR services, 2008	\$144,069	15	\$123,053
MR/DD waiver services, 2008	\$39,340	28	\$42,896

LTSS COSTS

Public & Private Payment Rates	State	Rank	U.S.
Medicaid payment per day for nursing facility care, 2011	\$191	17	\$178
Medicare payment per day for nursing facility care, 2010	\$437	10	\$398
Medicare reimbursement per home health visit, 2010	\$158	29	\$154
Private pay rate per day in nursing facility, 2011	\$202	23	\$193
Private pay rate per month in assisted living, 2011	\$3,288	25	\$3,261
Private pay daily rate for adult day care, 2011	\$60	27	\$60
Private pay hourly rate for home health aide, 2011	\$21	11	\$19

LTSS RESOURCES

HCBS Resources	State	Per 1,000 Age 65+	Rank	U.S.
Assisted living and residential care facilities, 2010	540	0.98	26	1.46
Assisted living and residential care units, 2010	16,664	30	19	31
Personal and home care aides, 2010	10,130	18	20	17
Median hourly wage, 2010	\$9.63		26	\$9.44
Home health aides, 2010	13,360	24	16	24
Median hourly wage, 2010	\$10.38		19	\$9.89
People receiving ACL congregate meals, 2009 *	20,442	38	34	42
People receiving ACL home delivered meals, 2009 *	8,030	15	40	22
Total ACL congregate and home delivered meal expenditures (total in millions of \$), 2009 *	\$14	\$27	38	\$36
Number of health maintenance tasks able to be delegated to LTSS workers (out of 16 tasks), 2011	16		1	

Nursing Facility Resources & Utilization	State	Per 1,000 Age 65+	Rank	U.S.
Total nursing facilities, 2010	216	0.39	29	0.40
Nursing facility beds, 2010	20,506	37	33	42
Nursing facility residents, 2010	16,421	30	35	35
Nursing facility occupancy rate, 2010	80%		37	83%
Direct care nursing hours per resident day, 2010	3.8		30	3.8
RN hours per day, 2010	0.80		17	0.64
Nursing facility staffing turnover, 2010	48%		13	40%

Nursing Facility Resident Characteristics	State	Rank	U.S.
Residents with dementia, 2010	45%	31	46%
Nursing facility residents with low care needs, 2008	20%	17	17%
Residents with Medicaid as primary payer, 2010	59%	39	63%
Residents with Medicare as primary payer, 2010	12%	34	14%
Residents with “other” as primary payer, 2010	29%	8	22%

Quality & Oversight of Nursing Facilities	State	Rank	U.S.
Residents with physical restraints, 2008	4%	15	4%
High risk residents with pressure sores, 2008	9%	39	12%
Long-stay residents with a hospital admission, 2008	12%	42	21%
Long-term care facility beds per FTE ombudsman, 2010	1,120	44	2,543
Nursing facilities visited by ombudsman at least quarterly, 2010	100%	1	76%

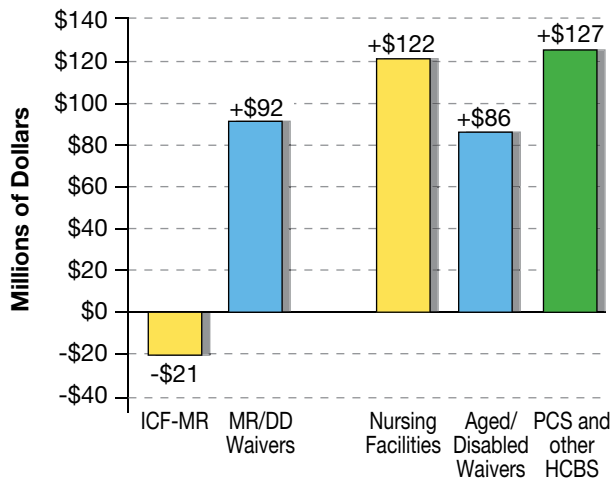
Note: the highest data value within each ranking is indicated by a rank of 1. For indicators in which both a total number and a ratio are given for the state value (percent of population, per person in the state, etc), the rank and U.S. values correspond to the ratio column.

* These programs were originally administered under AoA. For more information on the Administration for Community Living (ACL), please see <http://www.hhs.gov/acl>.

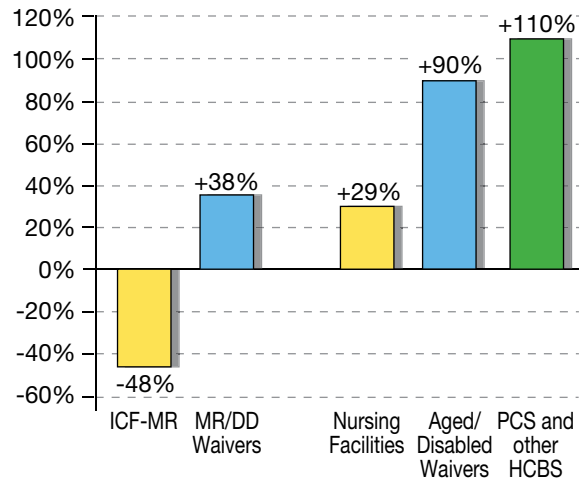
TRENDS

Medicaid HCBS Utilization	Year	State	Rank	U.S.
Medicaid HCBS participants, older people and adults with physical disabilities (excluding home health)	2003	15,634		1,270,155
	2008	17,490		1,577,471
	% change	+12%	35	+24%
Nursing Facility Residents	Year	State	Rank	U.S.
Nursing facility residents	2005	16,669		1,460,185
	2010	16,421		1,408,886
	% change	-1%	13	-4%
Long-Term Care Financing	Year	State	Rank	U.S.
Total Medicaid spending (millions)	2004	\$2,685		\$285,710
	2009	\$3,571		\$368,330
	% change	+33%	22	+29%
Medicaid LTSS spending for older people and adults with physical disabilities (millions)	2004	\$637		\$62,811
	2009	\$973		\$80,181
	% change	+53%	4	+28%
Medicaid nursing facility spending (millions)	2004	\$426		\$45,842
	2009	\$549		\$51,403
	% change	+29%	6	+12%
Medicaid HCBS spending for older people and adults with physical disabilities (millions)	2004	\$211		\$16,969
	2009	\$424		\$28,778
	% change	+101%	12	+70%
Medicaid HCBS as a % of LTSS spending, for older people and adults with physical disabilities	2004	33%	11	27%
	2009	44%	9	36%
	change	+11%	10	+9%

Change in Medicaid LTSS Spending, 2004–2009, by Service



Percent Change in Medicaid LTSS Spending, 2004–2009, by Service



Note: The highest data value within each ranking is indicated by a rank of 1. For indicators in which both a total number and a ratio are given for the state value (percent of population, per person in the state, etc), the rank and U.S. values correspond to the ratio column.