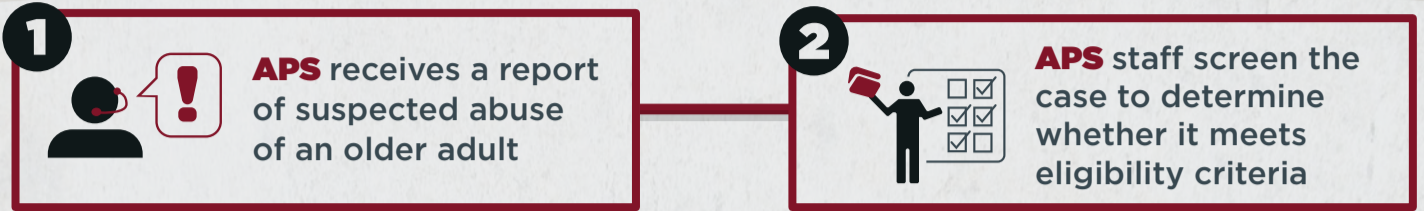


WHAT HAPPENS WHEN YOU REPORT SUSPECTED ELDER ABUSE

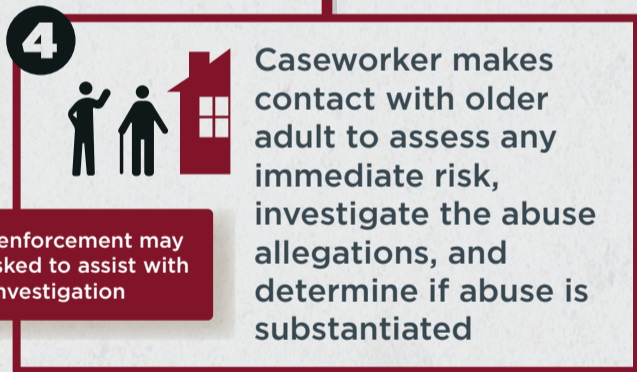
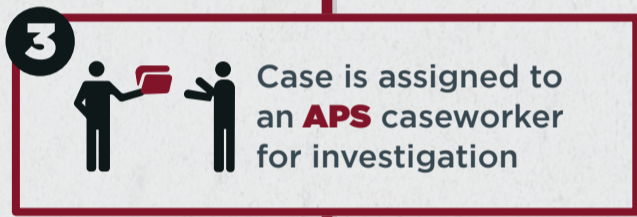


APS ELIGIBILITY CRITERIA

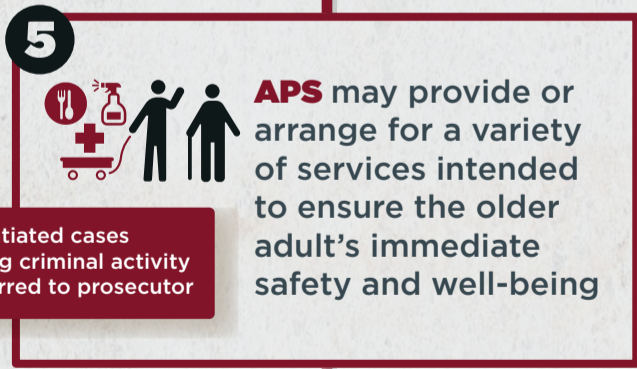
- Age of the victim
- Type of alleged elder abuse
- The victim’s vulnerability or dependence
- The victim’s relationship with the perpetrator

?
ELIGIBLE • NO . . .
YES

Case may be referred for other services as needed



Law enforcement may be asked to assist with the investigation



Substantiated cases involving criminal activity are referred to prosecutor

SERVICES MAY INCLUDE:

- Medical Care
- Emergency Placement
- Food Delivery
- Attendant Care

