

# UNEMPLOYMENT STATISTICS ON OLDER AMERICANS

*Prepared by Richard W. Johnson and Janice Park*

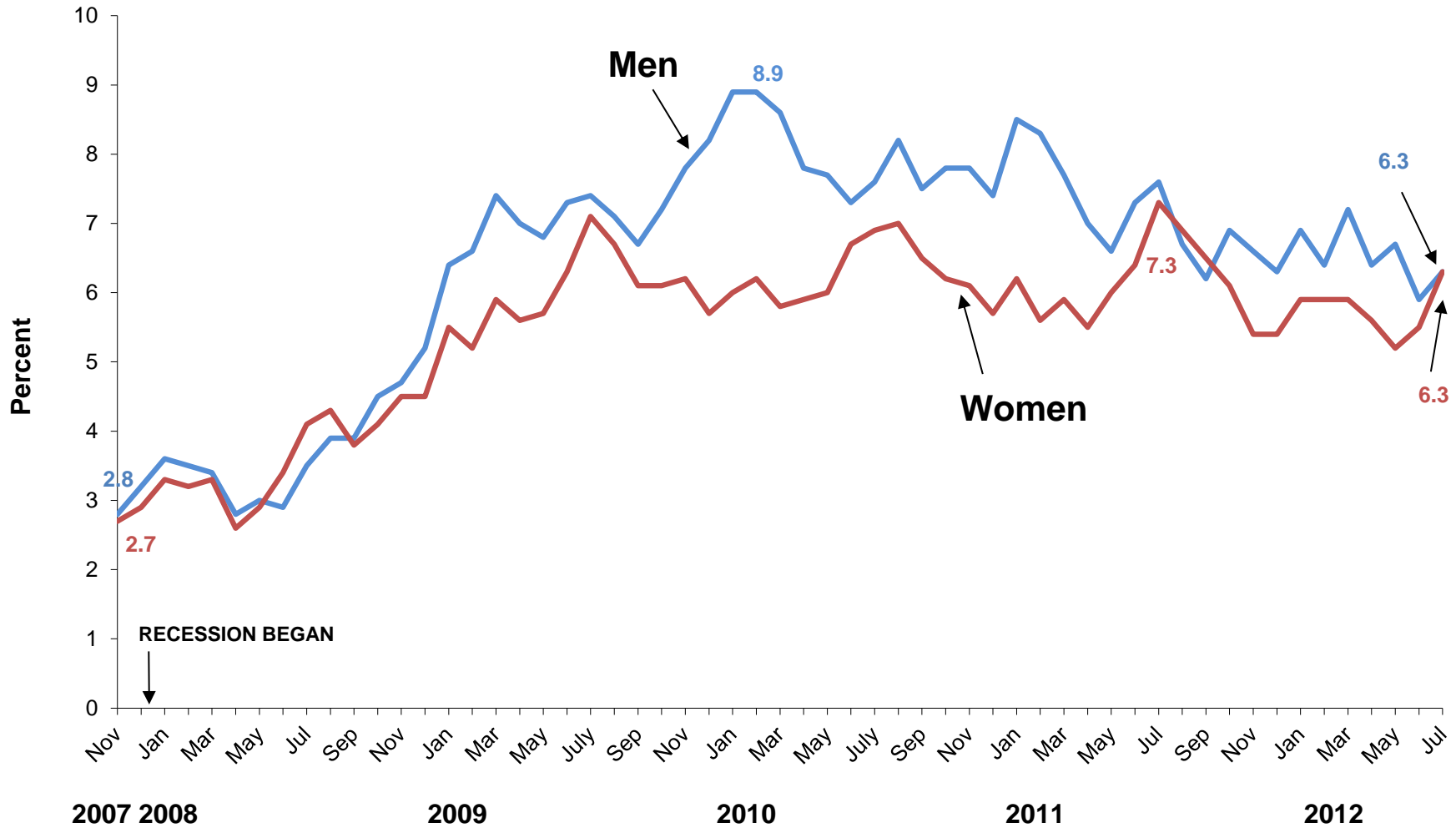
## Charts

1. Unemployment Rates for Men and Women Age 55-64, Nov. 2007 to Jul. 2012 (%)  
(not seasonally adjusted)
2. Unemployment Rates for Men and Women Age 65+, Nov. 2007 to Jul. 2012 (%)  
(not seasonally adjusted)
3. Male Unemployment Rates at Age 55+, by Education, Nov. 2007 to Jun. 2012 (%)  
(not seasonally adjusted)
4. Female Unemployment Rates at Age 55+, by Education, Nov. 2007 to Jun. 2012 (%)  
(not seasonally adjusted)
5. Male Unemployment Rates at Age 55+, by Race and Ethnicity, Nov. 2007 to Jun. 2012 (%)  
(not seasonally adjusted)
6. Female Unemployment Rates at Age 55+, by Race and Ethnicity, Nov. 2007 to Jun. 2012 (%)  
(not seasonally adjusted)

## Tables

1. Monthly Unemployment Rates, by Sex and Age, Nov. 2007 to Jul. 2012 (%)  
(not seasonally adjusted)
2. Monthly Unemployment Rates, by Sex and Age, Nov. 2007 to Jul. 2012 (%)  
(seasonally adjusted)
3. Monthly Unemployment Rates, by Sex and Education, Age 55+, Nov. 2007 to Jun. 2012 (%)  
(not seasonally adjusted)
4. Monthly Unemployment Rates, by Sex and Race and Ethnicity, Age 55+, Nov. 2007 to Jun. 2012 (%)  
(not seasonally adjusted)

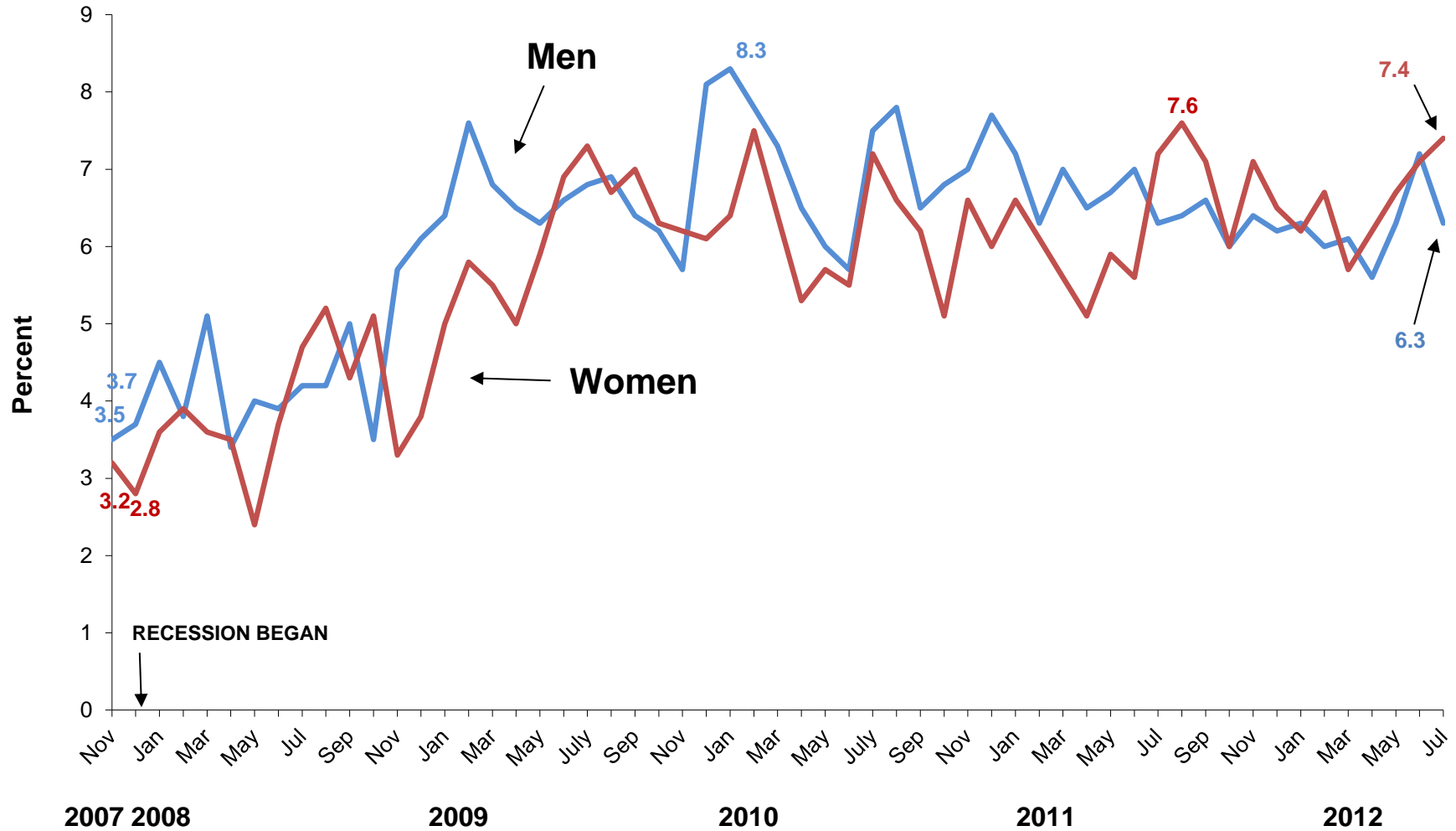
**Figure 1. Unemployment Rates for Men and Women Age 55–64, Nov. 2007 to Jul. 2012 (%)**  
(not seasonally adjusted)



Source: Bureau of Labor Statistics (2012).

Note: The unemployment rate is the number of adults who are out of work and who looked for work at some point over the past four weeks, divided by the number of adults in the labor force (employed and unemployed).

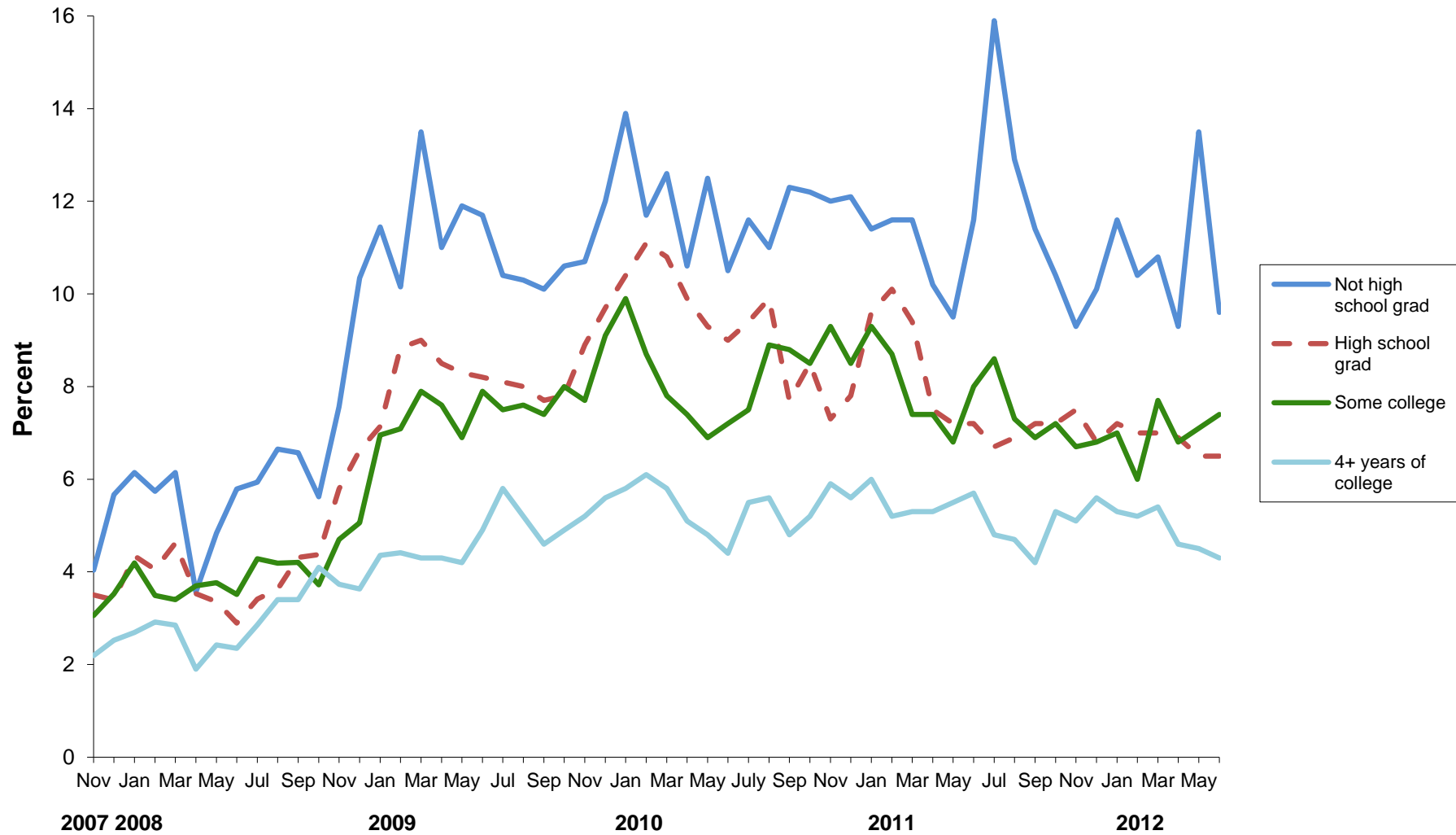
**Figure 2. Unemployment Rates for Men and Women Age 65+, Nov. 2007 to Jul. 2012 (%)**  
(not seasonally adjusted)



Source: Bureau of Labor Statistics (2012).

Note: The unemployment rate is the number of adults who are out of work and who looked for work at some point over the past four weeks, divided by the number of adults in the labor force (employed and unemployed).

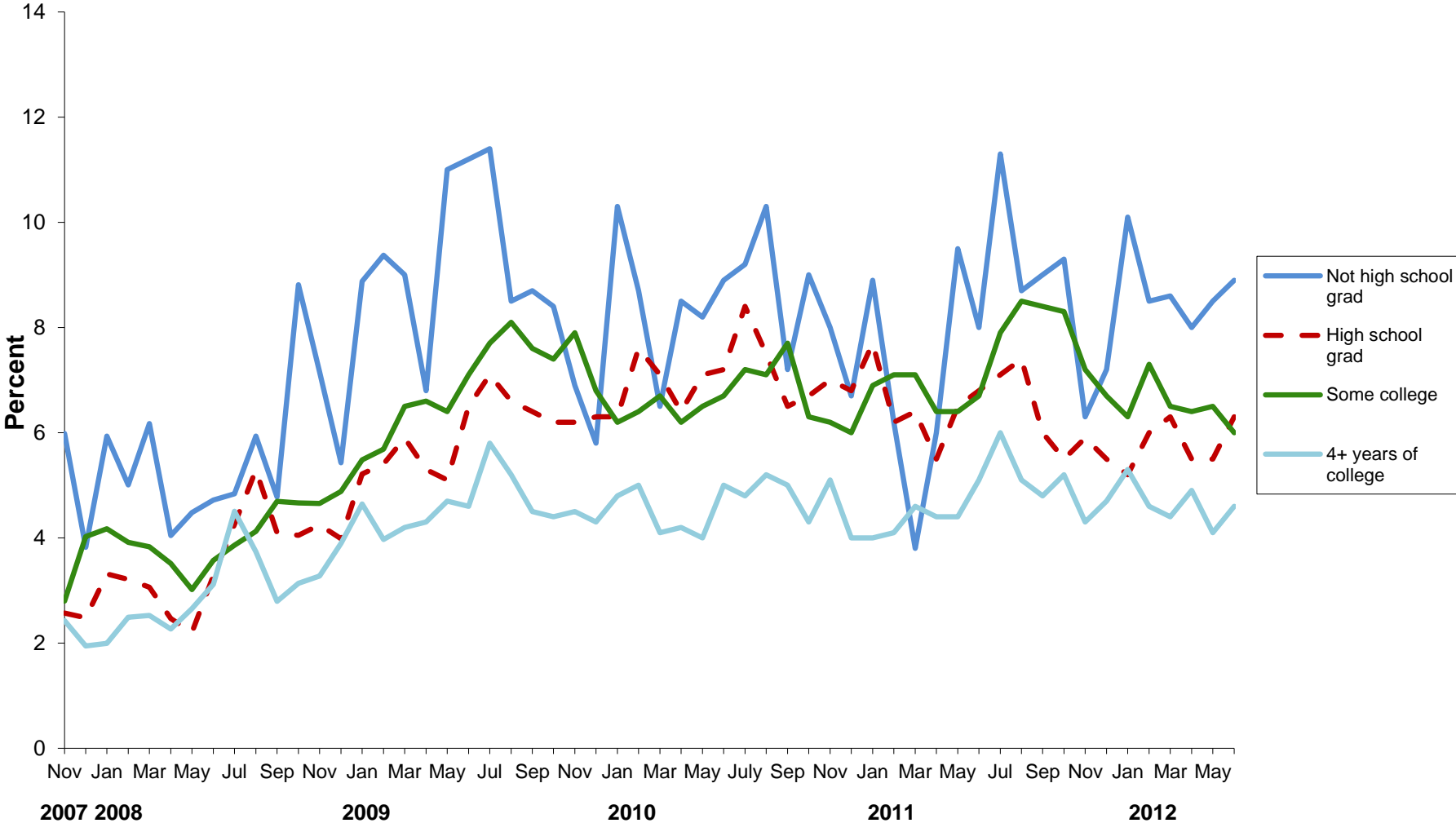
**Figure 3. Male Unemployment Rates at Age 55+, by Education, Nov. 2007 to Jun. 2012 (%)**  
(not seasonally adjusted)



Source: Urban Institute Program on Retirement Policy estimates from the Current Population Survey.

Note: The unemployment rate is the number of adults who are out of work and who looked for work at some point over the past four weeks, divided by the number of adults in the labor force (employed and unemployed).

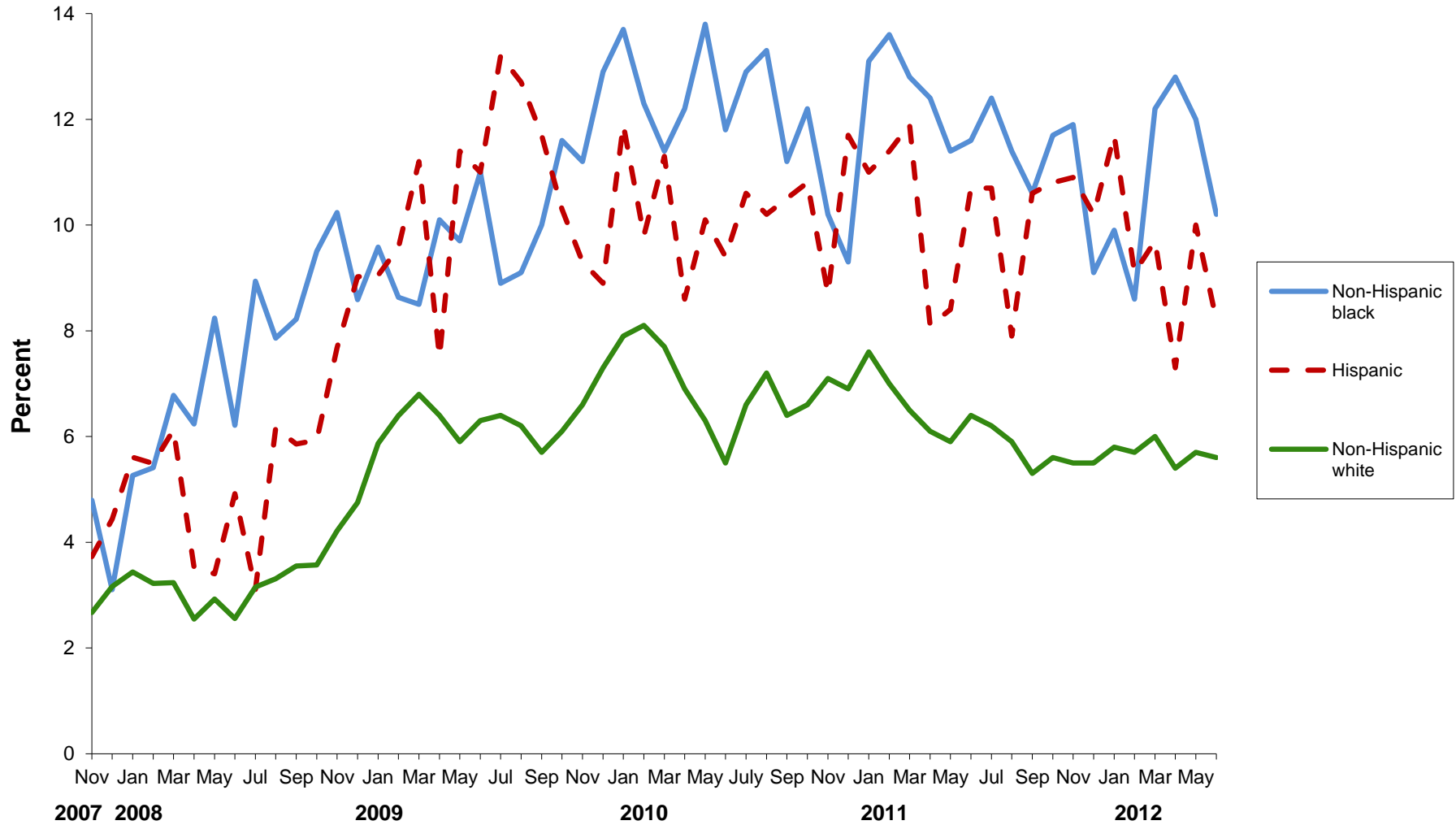
**Figure 4. Female Unemployment Rates at Age 55+, by Education, Nov. 2007 to Jun. 2012 (%)**  
(not seasonally adjusted)



Source: Urban Institute Program on Retirement Policy estimates from the Current Population Survey.

Note: The unemployment rate is the number of adults who are out of work and who looked for work at some point over the past four weeks, divided by the number of adults in the labor force (employed and unemployed).

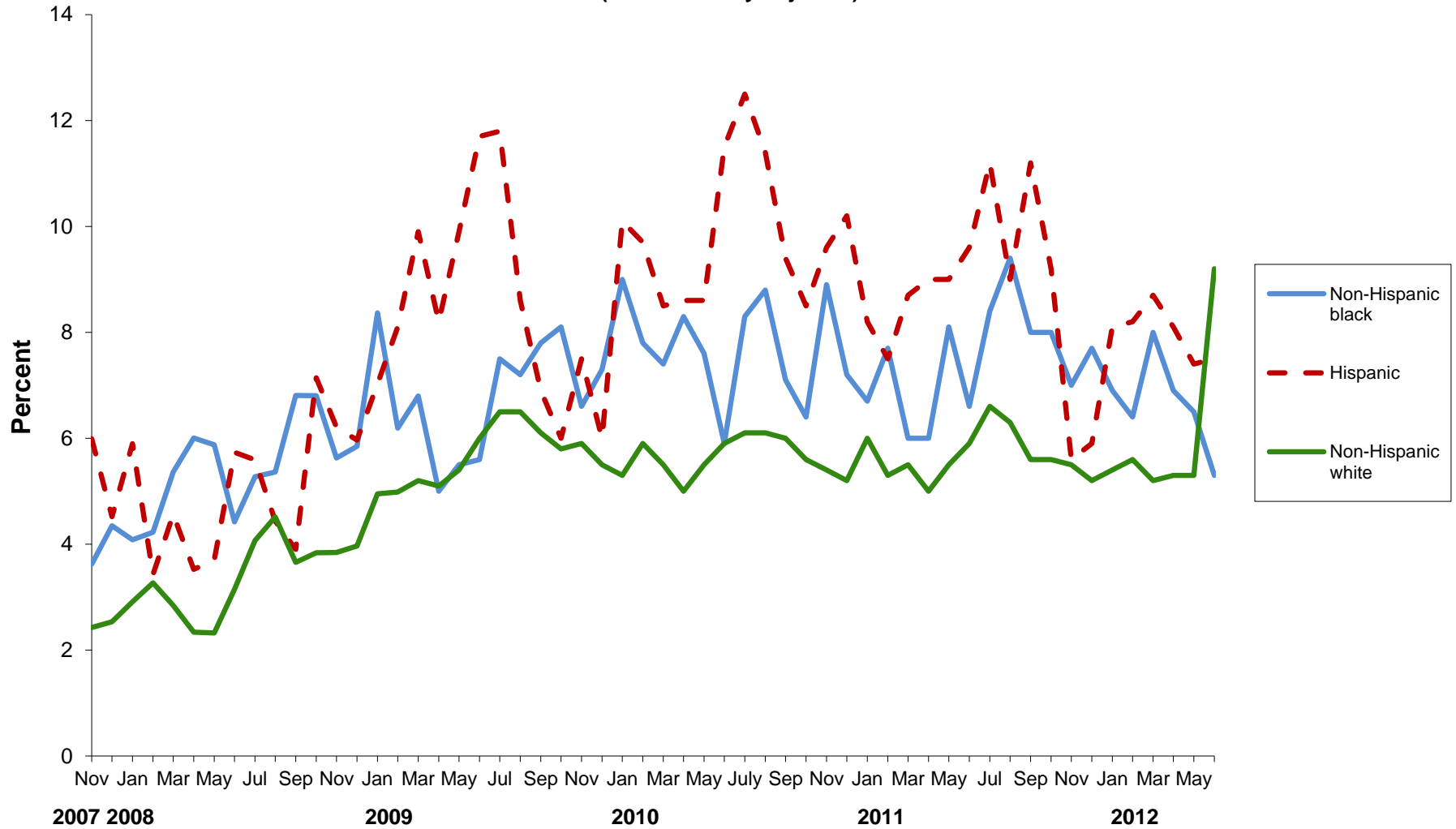
**Figure 5. Male Unemployment Rates at Age 55+, by Race and Ethnicity,  
Nov. 2007 to Jun. 2012 (%)**  
(not seasonally adjusted)



Source: Urban Institute Program on Retirement Policy estimates from the Current Population Survey.

Note: The unemployment rate is the number of adults who are out of work and who looked for work at some point over the past four weeks, divided by the number of adults in the labor force (employed and unemployed).

**Figure 6. Female Unemployment Rates at Age 55+, by Race and Ethnicity,  
Nov. 2007 to Jun. 2012 (%)**  
(not seasonally adjusted)



Source: Urban Institute Program on Retirement Policy estimates from the Current Population Survey.

Note: The unemployment rate is the number of adults who are out of work and who looked for work at some point over the past four weeks, divided by the number of adults in the labor force (employed and unemployed).

**Table 1. Monthly Unemployment Rates, by Sex and Age, Nov. 2007 to Jul. 2012 (%)**  
(not seasonally adjusted)

Year	Month	25-54			55+			55-64			65+		
		All	Men	Women	All	Men	Women	All	Men	Women	All	Men	Women
2007	Nov	3.7	3.5	3.9	2.9	2.9	2.8	2.7	2.8	2.7	3.4	3.5	3.2
	Dec	4.0	4.2	3.8	3.1	3.3	2.9	3.0	3.2	2.9	3.3	3.7	2.8
2008	Jan	4.4	4.7	4.0	3.6	3.8	3.4	3.5	3.6	3.3	4.1	4.5	3.6
	Feb	4.3	4.7	4.0	3.5	3.6	3.3	3.4	3.5	3.2	3.9	3.8	3.9
	Mar	4.5	4.8	4.1	3.6	3.8	3.4	3.3	3.4	3.3	4.4	5.1	3.6
	Apr	4.1	4.3	3.9	2.9	2.9	2.8	2.7	2.8	2.6	3.5	3.4	3.5
	May	4.1	4.1	4.1	3.0	3.3	2.8	3.0	3.0	2.9	3.3	4.0	2.4
	Jun	4.4	4.3	4.5	3.3	3.1	3.4	3.1	2.9	3.4	3.8	3.9	3.7
	Jul	4.7	4.7	4.8	3.9	3.7	4.3	3.8	3.5	4.1	4.4	4.2	4.7
	Aug	5.1	4.7	5.5	4.2	4.0	4.5	4.1	3.9	4.3	4.7	4.2	5.2
	Sep	4.9	5.1	4.7	4.0	4.2	3.9	3.8	3.9	3.8	4.7	5.0	4.3
	Oct	5.2	5.2	5.1	4.3	4.2	4.3	4.3	4.5	4.1	4.2	3.5	5.1
	Nov	5.6	5.8	5.3	4.6	4.9	4.3	4.6	4.7	4.5	4.6	5.7	3.3
	Dec	6.4	7.2	5.4	4.9	5.4	4.3	4.9	5.2	4.5	5.1	6.1	3.8
2009	Jan	7.7	8.9	6.3	5.9	6.4	5.4	6.0	6.4	5.5	5.7	6.4	5.0
	Feb	8.2	9.6	6.5	6.1	6.8	5.3	5.9	6.6	5.2	6.8	7.6	5.8
	Mar	8.3	9.7	6.7	6.6	7.3	5.8	6.7	7.4	5.9	6.2	6.8	5.5
	Apr	7.8	9.0	6.5	6.2	6.9	5.4	6.3	7.0	5.6	5.8	6.5	5.0
	May	8.0	9.0	6.8	6.3	6.7	5.8	6.3	6.8	5.7	6.1	6.3	5.9
	Jun	8.2	8.9	7.3	6.8	7.2	6.4	6.8	7.3	6.3	6.8	6.6	6.9
	Jul	8.4	8.9	7.8	7.2	7.2	7.1	7.2	7.4	7.1	7.0	6.8	7.3
	Aug	8.5	9.0	7.9	6.9	7.0	6.7	6.9	7.1	6.7	6.8	6.9	6.7
	Sep	8.6	9.2	7.8	6.5	6.7	6.3	6.4	6.7	6.1	6.7	6.4	7.0
	Oct	8.5	9.2	7.7	6.6	6.9	6.1	6.6	7.2	6.1	6.3	6.2	6.3
	Nov	8.4	9.3	7.3	6.8	7.3	6.2	7.0	7.8	6.2	5.9	5.7	6.2
	Dec	8.9	9.9	7.6	7.0	8.1	5.8	7.0	8.2	5.7	7.2	8.1	6.1
2010	Jan	9.6	11.1	8.0	7.5	8.8	6.1	7.5	8.9	6.0	7.4	8.3	6.4
	Feb	9.5	11.2	7.7	7.6	8.6	6.5	7.6	8.9	6.2	7.7	7.8	7.5
	Mar	9.5	10.9	7.8	7.2	8.3	6.0	7.3	8.6	5.8	6.9	7.3	6.4
	Apr	8.5	9.4	7.5	6.7	7.5	5.7	6.9	7.8	5.9	6.0	6.5	5.3
	May	8.3	9.0	7.5	6.6	7.3	5.9	6.9	7.7	6.0	5.9	6.0	5.7
	Jun	8.2	8.8	7.5	6.7	6.9	6.5	7.0	7.3	6.7	5.6	5.7	5.5
	Jul	8.4	8.4	8.3	7.3	7.6	6.9	7.3	7.6	6.9	7.4	7.5	7.2
	Aug	8.4	8.3	8.4	7.5	8.1	6.9	7.6	8.2	7.0	7.3	7.8	6.6
	Sep	8.2	8.5	7.9	6.9	7.3	6.4	7.0	7.5	6.5	6.4	6.5	6.2
	Oct	7.9	8.1	7.7	6.8	7.5	5.9	7.0	7.8	6.2	6.0	6.8	5.1
	Nov	8.4	8.8	7.9	7.0	7.7	6.2	7.0	7.8	6.1	6.8	7.0	6.6
	Dec	8.4	9.2	7.5	6.7	7.5	5.8	6.6	7.4	5.7	6.9	7.7	6.0
2011	Jan	8.7	9.7	7.6	7.3	8.2	6.3	7.4	8.5	6.2	6.9	7.2	6.6
	Feb	8.6	9.4	7.6	6.8	7.8	5.7	7.0	8.3	5.6	6.2	6.3	6.1
	Mar	8.3	9.2	7.3	6.7	7.5	5.8	6.8	7.7	5.9	6.4	7.0	5.6
	Apr	7.8	8.3	7.3	6.2	6.8	5.4	6.2	7.0	5.5	5.8	6.5	5.1
	May	7.7	8.0	7.3	6.3	6.6	6.0	6.3	6.6	6.0	6.3	6.7	5.9
	Jun	8.0	8.1	7.9	6.8	7.2	6.3	6.9	7.3	6.4	6.4	7.0	5.6
	Jul	8.0	7.9	8.1	7.3	7.3	7.3	7.5	7.6	7.3	6.7	6.3	7.2
	Aug	8.0	7.7	8.3	6.8	6.6	7.1	6.8	6.7	6.9	6.9	6.4	7.6
	Sep	7.8	7.7	8.0	6.5	6.3	6.6	6.3	6.2	6.5	6.8	6.6	7.1
	Oct	7.5	7.6	7.4	6.6	6.7	6.5	6.5	6.9	6.1	6.9	6.0	8.1
	Nov	7.3	7.2	7.3	6.2	6.5	5.8	6.0	6.6	5.4	6.7	6.4	7.1
	Dec	7.5	7.7	7.3	6.0	6.3	5.7	5.9	6.3	5.4	6.3	6.2	6.5
2012	Jan	8.0	8.2	7.7	6.4	6.8	5.9	6.4	6.9	5.9	6.2	6.3	6.2
	Feb	7.8	8.1	7.5	6.2	6.3	6.1	6.1	6.4	5.9	6.3	6.0	6.7
	Mar	7.4	7.9	6.9	6.4	6.9	5.9	6.6	7.2	5.9	5.9	6.1	5.7
	Apr	6.7	6.8	6.6	6.0	6.2	5.8	6.0	6.4	5.6	5.9	5.6	6.2
	May	6.8	6.7	6.8	6.1	6.6	5.6	6.0	6.7	5.2	6.5	6.3	6.7
	Jun	7.0	6.7	7.4	6.0	6.2	5.8	5.7	5.9	5.5	7.2	7.2	7.1
	Jul	7.2	6.5	8.0	6.5	6.5	6.6	6.3	6.3	6.3	7.2	6.3	7.4

Source: Bureau of Labor Statistics (2012).

Note: The unemployment rate is the number of adults who are out of work and who looked for work at some point over the past four weeks, divided by the number of adults in the labor force (employed and unemployed). The recession began in December 2007 and ended in June 2009, according to the National Bureau of Economic Research.



**Table 2. Monthly Unemployment Rates, by Sex and Age, Nov. 2007 to Jul. 2012 (%)**  
(seasonally adjusted)

Year	Month	All			25-54			55+	
		All	Men	Women	All	Men	Women	All	Men*
2007	Nov	4.7	4.8	4.6	3.9	3.8	4.0	3.0	3.1
	Dec	5.0	5.1	4.9	4.0	4.0	4.1	3.2	3.2
2008	Jan	5.0	5.2	4.8	4.0	4.0	3.9	3.3	3.3
	Feb	4.9	5.0	4.7	3.9	3.9	4.0	3.3	3.2
	Mar	5.1	5.2	5.0	4.2	4.2	4.2	3.4	3.4
	Apr	5.0	5.1	4.8	4.2	4.3	4.1	3.0	3.0
	May	5.4	5.6	5.2	4.4	4.4	4.4	3.3	3.5
	Jun	5.6	5.8	5.3	4.5	4.6	4.5	3.3	3.4
	Jul	5.8	6.2	5.3	4.7	5.0	4.4	3.7	3.7
	Aug	6.1	6.3	5.9	5.2	5.2	5.1	4.1	4.2
	Sep	6.1	6.7	5.5	5.2	5.6	4.6	4.2	4.5
	Oct	6.5	7.1	5.9	5.5	5.8	5.2	4.5	4.6
	Nov	6.8	7.4	6.2	5.9	6.2	5.5	4.8	5.1
	Dec	7.3	8.0	6.5	6.4	7.0	5.7	5.0	5.2
2009	Jan	7.8	8.6	7.0	7.0	7.6	6.2	5.4	5.5
	Feb	8.3	9.2	7.3	7.4	8.2	6.5	5.7	6.2
	Mar	8.7	9.7	7.6	7.7	8.5	6.8	6.3	6.6
	Apr	8.9	10.1	7.6	8.0	9.0	6.8	6.5	6.9
	May	9.4	10.6	8.0	8.4	9.5	7.2	6.7	7.1
	Jun	9.5	10.6	8.3	8.5	9.5	7.3	7.0	7.7
	Jul	9.5	10.5	8.3	8.5	9.6	7.2	6.7	7.3
	Aug	9.6	10.8	8.3	8.7	9.9	7.3	6.7	7.4
	Sep	9.8	10.9	8.4	8.9	10.1	7.6	6.8	7.2
	Oct	10.0	11.2	8.7	9.1	10.1	7.9	6.9	7.6
	Nov	9.9	11.1	8.6	8.8	9.9	7.5	7.0	7.6
	Dec	9.9	10.9	8.7	8.9	9.6	8.0	7.2	7.9
2010	Jan	9.7	10.9	8.4	8.7	9.5	7.8	6.8	7.6
	Feb	9.8	10.8	8.6	8.7	9.6	7.7	7.2	7.8
	Mar	9.8	10.9	8.6	8.8	9.6	7.9	6.9	7.5
	Apr	9.9	10.8	8.8	8.7	9.3	7.9	7.0	7.6
	May	9.6	10.4	8.8	8.7	9.4	7.8	7.1	7.7
	Jun	9.4	10.4	8.3	8.5	9.3	7.5	6.8	7.5
	Jul	9.5	10.4	8.5	8.4	9.0	7.7	6.8	7.6
	Aug	9.6	10.4	8.6	8.5	9.1	7.8	7.3	8.5
	Sep	9.5	10.3	8.5	8.5	9.2	7.8	7.1	7.9
	Oct	9.5	10.2	8.8	8.4	8.9	7.9	7.1	8.2
	Nov	9.8	10.5	9.0	8.8	9.3	8.1	7.2	7.9
	Dec	9.4	10.0	8.6	8.4	8.9	7.8	6.9	7.3
2011	Jan	9.1	9.6	8.5	7.9	8.3	7.4	6.7	7.2
	Feb	9.0	9.4	8.5	7.9	8.1	7.7	6.5	7.1
	Mar	8.9	9.4	8.3	7.8	8.1	7.5	6.5	6.8
	Apr	9.0	9.5	8.4	8.0	8.3	7.6	6.5	6.9
	May	9.0	9.5	8.5	8.1	8.4	7.7	6.7	7.0
	Jun	9.1	9.7	8.5	8.2	8.6	7.8	6.9	7.8
	Jul	9.1	9.6	8.5	8.0	8.4	7.6	6.8	7.3
	Aug	9.1	9.5	8.5	8.1	8.4	7.7	6.6	6.9
	Sep	9.0	9.4	8.6	8.1	8.3	7.8	6.7	6.9
	Oct	8.9	9.4	8.4	8.0	8.4	7.5	7.0	7.2
	Nov	8.7	8.9	8.3	7.6	7.7	7.5	6.4	6.7
	Dec	8.5	8.7	8.3	7.6	7.5	7.6	6.2	6.1
2012	Jan	8.3	8.3	8.3	7.4	7.2	7.6	5.9	5.9
	Feb	8.3	8.3	8.2	7.3	7.1	7.6	5.9	5.7
	Mar	8.2	8.3	8.1	7.1	7.0	7.2	6.2	6.3
	Apr	8.1	8.2	8.0	6.9	6.9	7.0	6.3	6.3
	May	8.2	8.4	7.9	7.1	7.0	7.2	6.5	7.0
	Jun	8.2	8.4	8.0	7.2	7.0	7.3	6.2	6.7
	Jul	8.3	8.4	8.1	7.2	7.0	7.4	6.2	6.5

Source: Bureau of Labor Statistics (2012).

Note: The unemployment rate is the number of adults who are out of work and who looked for work at some point over the past four weeks, divided by the number of adults in the labor force (employed and unemployed). The recession began in December 2007 and ended in June 2009, according to the National Bureau of Economic Research.

\* The Bureau of Labor Statistics does not seasonally adjust unemployment rates for women age 55 and older.

**Table 3. Monthly Unemployment Rates, by Sex and Education, Age 55+, Nov. 2007 to Jun. 2012 (%)**  
(not seasonally adjusted)

Year	Month	Not High School Graduate			High School Graduate			Some College			4 or More Years of College		
		All	Men	Women	All	Men	Women	All	Men	Women	All	Men	Women
2007	Nov	4.8	4.0	6.0	3.0	3.5	2.6	2.9	3.1	2.8	2.3	2.2	2.4
	Dec	4.9	5.7	3.8	2.9	3.4	2.5	3.8	3.5	4.0	2.3	2.5	1.9
2008	Jan	6.1	6.1	5.9	3.8	4.3	3.3	4.2	4.2	4.2	2.4	2.7	2.0
	Feb	5.4	5.7	5.0	3.6	4.1	3.2	3.7	3.5	3.9	2.7	2.9	2.5
	Mar	6.2	6.1	6.2	3.8	4.6	3.1	3.6	3.4	3.8	2.7	2.8	2.5
	Apr	3.8	3.6	4.0	3.0	3.5	2.5	3.6	3.7	3.5	2.1	1.9	2.3
	May	4.7	4.8	4.5	2.8	3.4	2.2	3.4	3.8	3.0	2.5	2.4	2.7
	Jun	5.3	5.8	4.7	3.1	2.9	3.3	3.5	3.5	3.6	2.7	2.3	3.1
	Jul	5.5	5.9	4.8	3.8	3.4	4.3	4.1	4.3	3.9	3.5	2.9	4.5
	Aug	6.3	6.6	5.9	4.5	3.6	5.3	4.2	4.2	4.1	3.5	3.4	3.7
	Sep	5.8	6.6	4.8	4.2	4.3	4.1	4.5	4.2	4.7	3.1	3.4	2.8
	Oct	7.0	5.6	8.8	4.2	4.4	4.0	4.2	3.7	4.7	3.7	4.1	3.1
	Nov	7.4	7.6	7.2	5.0	5.8	4.2	4.7	4.7	4.7	3.5	3.7	3.3
	Dec	8.3	10.3	5.4	5.3	6.6	4.0	5.0	5.1	4.9	3.7	3.6	3.9
2009	Jan	10.3	11.4	8.9	6.2	7.1	5.2	6.2	7.0	5.5	4.5	4.4	4.6
	Feb	9.8	10.2	9.4	7.1	8.8	5.4	6.4	7.1	5.7	4.2	4.4	4.0
	Mar	11.6	13.5	9.0	7.4	9.0	5.9	7.2	7.9	6.5	4.2	4.3	4.2
	Apr	9.3	11.0	6.8	6.8	8.5	5.3	7.1	7.6	6.6	4.3	4.3	4.3
	May	11.5	11.9	11.0	6.6	8.3	5.1	6.7	6.9	6.4	4.4	4.2	4.7
	Jun	11.5	11.7	11.2	7.3	8.2	6.5	7.5	7.9	7.1	4.8	4.9	4.6
	Jul	10.8	10.4	11.4	7.6	8.1	7.1	7.6	7.5	7.7	5.8	5.8	5.8
	Aug	9.6	10.3	8.5	7.3	8.0	6.6	7.9	7.6	8.1	5.2	5.2	5.2
	Sep	9.5	10.1	8.7	7.1	7.7	6.4	7.5	7.4	7.6	4.6	4.6	4.5
	Oct	9.7	10.6	8.4	7.0	7.8	6.2	7.7	8.0	7.4	4.7	4.9	4.4
	Nov	9.1	10.7	6.9	7.6	8.9	6.2	7.8	7.7	7.9	4.9	5.2	4.5
	Dec	9.4	12.0	5.8	8.0	9.7	6.3	7.9	9.1	6.8	5.0	5.6	4.3
2010	Jan	12.4	13.9	10.3	8.3	10.4	6.3	8.0	9.9	6.2	5.4	5.8	4.8
	Feb	10.4	11.7	8.7	9.3	11.1	7.6	7.5	8.7	6.4	5.6	6.1	5.0
	Mar	10.1	12.6	6.5	8.9	10.8	7.1	7.3	7.8	6.7	5.1	5.8	4.1
	Apr	9.7	10.6	8.5	8.1	9.9	6.4	6.8	7.4	6.2	4.7	5.1	4.2
	May	10.7	12.5	8.2	8.1	9.3	7.1	6.7	6.9	6.5	4.5	4.8	4.0
	Jun	9.8	10.5	8.9	8.1	9.0	7.2	6.9	7.2	6.7	4.7	4.4	5.0
	Jul	10.5	11.6	9.2	8.9	9.4	8.4	7.3	7.5	7.2	5.2	5.5	4.8
	Aug	10.7	11.0	10.3	8.7	9.9	7.5	8.0	8.9	7.1	5.5	5.6	5.2
	Sep	10.1	12.3	7.2	7.1	7.7	6.5	8.3	8.8	7.7	4.9	4.8	5.0
	Oct	10.9	12.2	9.0	7.6	8.5	6.7	7.4	8.5	6.3	4.8	5.2	4.3
	Nov	10.3	12.0	8.0	7.1	7.3	7.0	7.7	9.3	6.2	5.5	5.9	5.1
	Dec	10.7	12.1	8.7	7.3	7.8	6.8	7.2	8.5	6.0	5.0	5.6	4.0
2011	Jan	10.4	11.4	8.9	8.6	9.6	7.7	8.1	9.3	6.9	5.1	6.0	4.0
	Feb	9.4	11.6	6.2	8.2	10.1	6.2	7.9	8.7	7.1	4.7	5.2	4.1
	Mar	8.6	11.6	3.8	7.9	9.4	6.4	7.2	7.4	7.1	5.0	5.3	4.6
	Apr	8.5	10.2	6.0	6.5	7.5	5.5	6.9	7.4	6.4	4.9	5.3	4.4
	May	9.5	9.5	9.5	6.8	7.2	6.5	6.6	6.8	6.4	5.0	5.5	4.4
	Jun	10.2	11.6	8.0	7.0	7.2	6.8	7.3	8.0	6.7	5.4	5.7	5.1
	Jul	14.0	15.9	11.3	6.9	6.7	7.1	8.3	8.6	7.9	5.3	4.8	6.0
	Aug	11.1	12.9	8.7	7.2	6.9	7.4	7.9	7.3	8.5	4.9	4.7	5.1
	Sep	10.3	11.4	9.0	6.6	7.2	6.0	7.6	6.9	8.4	4.9	4.2	4.8
	Oct	9.9	10.4	9.3	6.4	7.2	5.5	7.7	7.2	8.3	5.3	5.3	5.2
	Nov	8.0	9.3	6.3	6.7	7.5	5.9	6.9	6.7	7.2	4.8	5.1	4.3
	Dec	8.8	10.1	7.2	6.1	6.8	5.5	6.8	6.8	6.7	4.7	5.6	4.7
2012	Jan	10.9	11.6	10.1	6.3	7.2	5.2	6.7	7.0	6.3	5.3	5.3	5.3
	Feb	9.6	10.4	8.5	6.5	7.0	6.0	6.7	6.0	7.3	4.9	5.2	4.6
	Mar	9.8	10.8	8.6	6.7	7.0	6.3	7.1	7.7	6.5	5.0	5.4	4.4
	Apr	8.7	9.3	8.0	6.3	6.9	5.5	6.6	6.8	6.4	4.8	4.6	4.9
	May	11.5	13.5	8.5	6.0	6.5	5.5	6.8	7.1	6.5	4.4	4.5	4.1
	Jun	9.3	9.6	8.9	6.4	6.5	6.3	6.7	7.4	6.0	4.4	4.3	4.6

Source: Urban Institute Retirement Policy Program estimates from the Current Population Survey.

Note: The unemployment rate is the number of adults who are out of work and who looked for work at some point over the past four weeks, divided by the number of adults in the labor force (employed and unemployed). The recession began in December 2007 and ended in June 2009, according to the National Bureau of Economic Research.

**Table 4. Monthly Unemployment Rates, by Sex and Race and Ethnicity, Age 55+, Nov. 2007 to Jun. 2012 (%)**  
(not seasonally adjusted)

Year	Month	Non-Hispanic White			Non-Hispanic Black			Hispanic		
		All	Men	Women	All	Men	Women	All	Men	Women
2007	Nov	2.6	2.7	2.4	4.1	4.8	3.6	4.7	3.7	6.0
	Dec	2.9	3.2	2.5	3.8	3.1	4.3	4.5	4.4	4.5
2008	Jan	3.2	3.4	2.9	4.6	5.3	4.1	5.7	5.6	5.9
	Feb	3.2	3.2	3.3	4.7	5.4	4.2	4.6	5.5	3.4
	Mar	3.1	3.2	2.8	6.0	6.8	5.4	5.5	6.1	4.6
	Apr	2.5	2.5	2.3	6.1	6.2	6.0	3.5	3.5	3.5
	May	2.6	2.9	2.3	7.0	8.2	5.9	3.5	3.4	3.7
	Jun	2.8	2.6	3.1	5.3	6.2	4.4	5.3	4.9	5.7
	Jul	3.6	3.2	4.1	7.0	8.9	5.3	4.2	3.1	5.6
	Aug	3.9	3.3	4.5	6.5	7.9	5.4	5.4	6.2	4.4
	Sep	3.6	3.6	3.7	7.5	8.2	6.8	5.0	5.9	3.9
	Oct	3.7	3.6	3.8	8.0	9.5	6.8	6.4	5.9	7.1
	Nov	4.0	4.2	3.8	7.7	10.2	5.6	7.0	7.7	6.2
	Dec	4.4	4.8	4.0	7.1	8.6	5.8	7.7	9.0	6.0
2009	Jan	5.4	5.9	4.9	8.9	9.6	8.4	8.2	9.1	7.0
	Feb	5.7	6.4	5.0	7.3	8.6	6.2	9.0	9.6	8.1
	Mar	6.1	6.8	5.2	7.6	8.5	6.8	10.6	11.2	9.9
	Apr	5.8	6.4	5.1	7.4	10.1	5.0	7.8	7.5	8.2
	May	5.7	5.9	5.4	7.4	9.7	5.5	10.7	11.4	9.9
	Jun	6.1	6.3	6.0	8.0	11.0	5.6	11.3	11.0	11.7
	Jul	6.4	6.4	6.5	8.1	8.9	7.5	12.6	13.2	11.8
	Aug	6.4	6.2	6.5	8.1	9.1	7.2	10.9	12.7	8.6
	Sep	5.9	5.7	6.1	8.8	10.0	7.8	9.5	11.7	6.9
	Oct	6.0	6.1	5.8	9.7	11.6	8.1	8.4	10.3	6.0
	Nov	6.3	6.6	5.9	8.8	11.2	6.6	8.5	9.3	7.5
	Dec	6.5	7.3	5.5	9.9	12.9	7.3	7.6	8.9	6.0
2010	Jan	6.7	7.9	5.3	11.2	13.7	9	11.1	11.9	10.1
	Feb	7.1	8.1	5.9	9.8	12.3	7.8	9.8	9.8	9.7
	Mar	6.7	7.7	5.5	9.3	11.4	7.4	10.1	11.3	8.5
	Apr	6.0	6.9	5.0	10.0	12.2	8.3	8.6	8.6	8.6
	May	5.9	6.3	5.5	10.4	13.8	7.6	9.4	10.1	8.6
	Jun	6.1	6.2	5.9	8.6	11.8	5.9	10.4	9.4	11.5
	Jul	6.4	6.6	6.1	10.4	12.9	8.3	11.4	10.6	12.5
	Aug	6.7	7.2	6.1	10.9	13.3	8.8	10.7	10.2	11.4
	Sep	6.2	6.4	6.0	8.9	11.2	7.1	10.0	10.5	9.4
	Oct	6.1	6.6	5.6	9.0	12.2	6.4	9.8	10.8	8.5
	Nov	6.3	7.1	5.4	9.5	10.2	8.8	9.0	8.7	9.5
	Dec	6.1	6.9	5.2	8.2	9.3	7.2	11.0	11.7	10.2
2011	Jan	6.8	7.6	6.0	9.5	13.1	6.7	9.7	11.0	8.2
	Feb	6.2	7.0	5.3	10.3	13.6	7.7	9.6	11.4	7.5
	Mar	6.0	6.5	5.5	9.1	12.8	6.0	10.4	11.9	8.7
	Apr	5.6	6.1	5.0	8.9	12.4	6.0	8.5	8.1	9.0
	May	5.7	5.9	5.5	9.6	11.4	8.1	8.6	8.4	9.0
	Jun	6.2	6.4	5.9	8.9	11.6	6.6	10.2	10.7	9.6
	Jul	6.4	6.2	6.6	10.3	12.4	8.4	10.9	10.7	11.2
	Aug	6.1	5.9	6.3	10.3	11.4	9.4	8.4	7.9	9.0
	Sep	5.5	5.3	5.6	9.2	10.6	8.0	10.9	10.6	11.2
	Oct	5.6	5.6	5.6	9.7	11.7	8.0	10.1	10.8	9.2
	Nov	5.5	5.5	5.6	9.2	11.9	7.0	8.6	10.9	5.6
	Dec	5.4	5.5	5.2	8.3	9.1	7.7	8.3	10.2	5.9
2012	Jan	5.6	5.8	5.4	8.2	9.9	6.9	10.1	11.7	8.1
	Feb	5.7	5.7	5.6	7.4	8.6	6.4	8.7	9.1	8.2
	Mar	5.6	6.0	5.2	10.0	12.2	8.0	9.2	9.7	8.7
	Apr	5.4	5.4	5.3	9.6	12.8	6.9	7.7	7.3	8.1
	May	5.5	5.7	5.3	9.1	12.0	6.5	8.9	10.0	7.4
	Jun	5.5	5.6	5.3	8.8	10.2	7.5	8.6	8.2	9.2

Source: Urban Institute Retirement Policy Program estimates from the Current Population Survey.

Note: The unemployment rate is the number of adults who are out of work and who looked for work at some point over the past four weeks, divided by the number of adults in the labor force (employed and unemployed). The recession began in December 2007 and ended in June 2009, according to the National Bureau of Economic Research.