

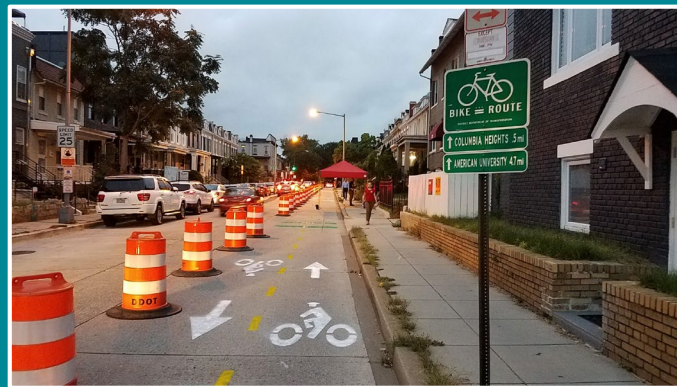
How do you Eat an Elephant? One Bite at a Time



Veronica O. Davis, PE



@VeronicaODavis
@NspiregreenLLC





blackwomen
BIKE





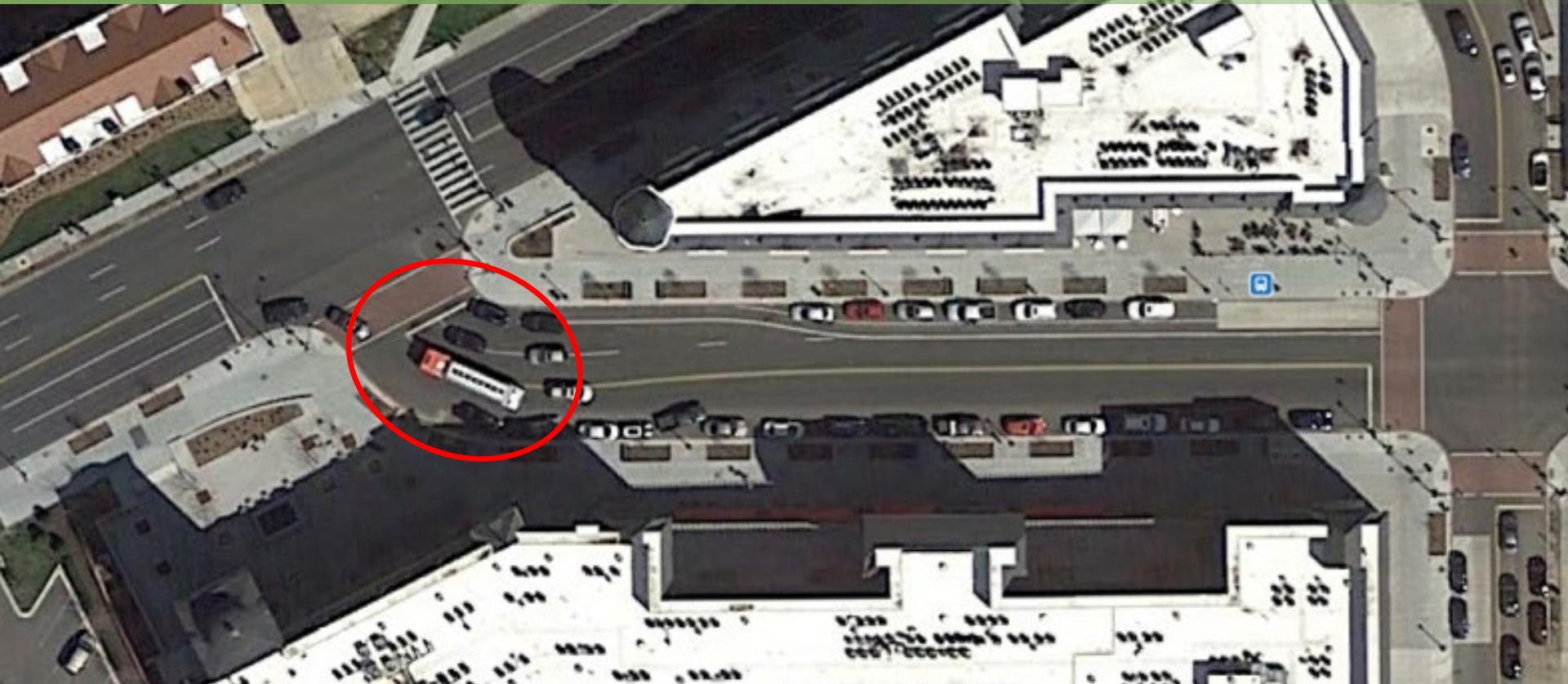
Windows



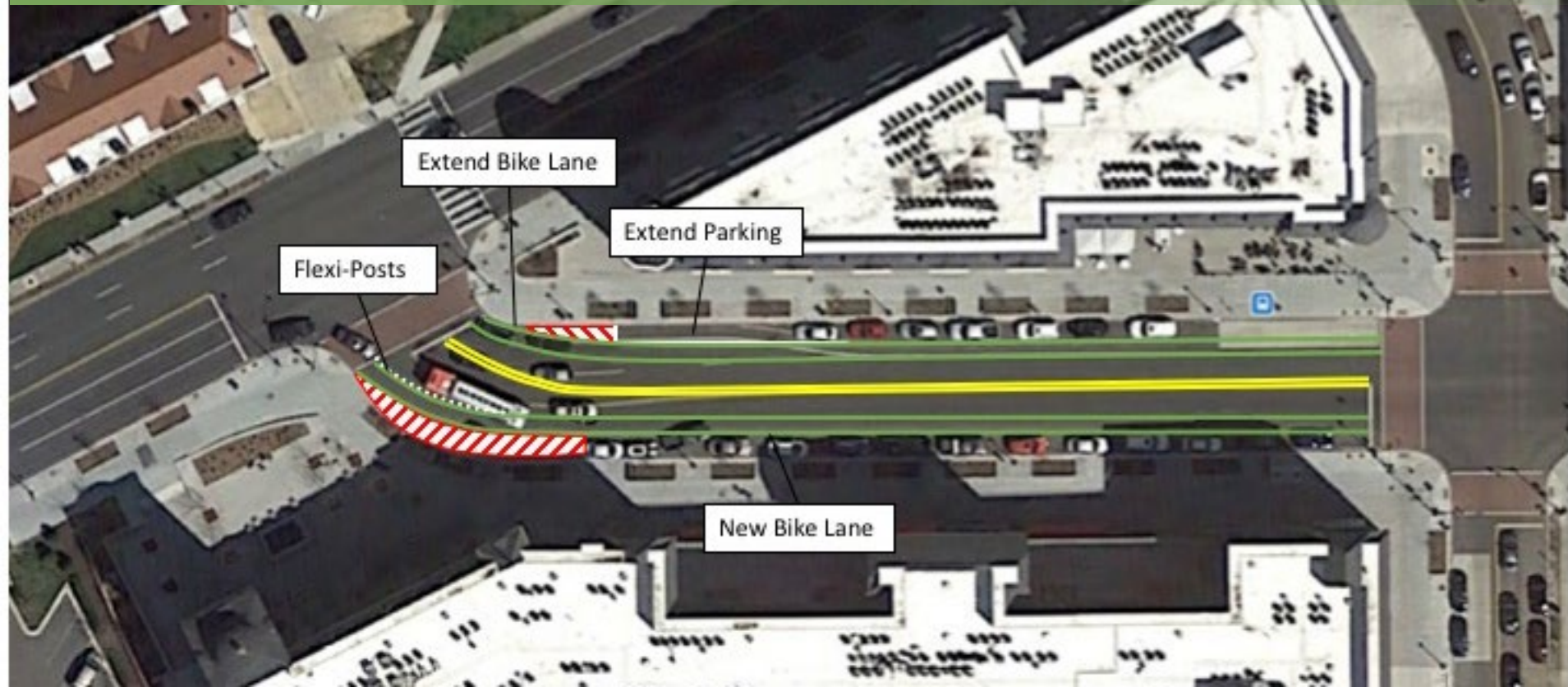
I BELIEVE THAT
#WEWILLWIN

BIKE

Superpower: Quick Fixes



Superpower: Quick Fixes



Superpower: Quick Fixes



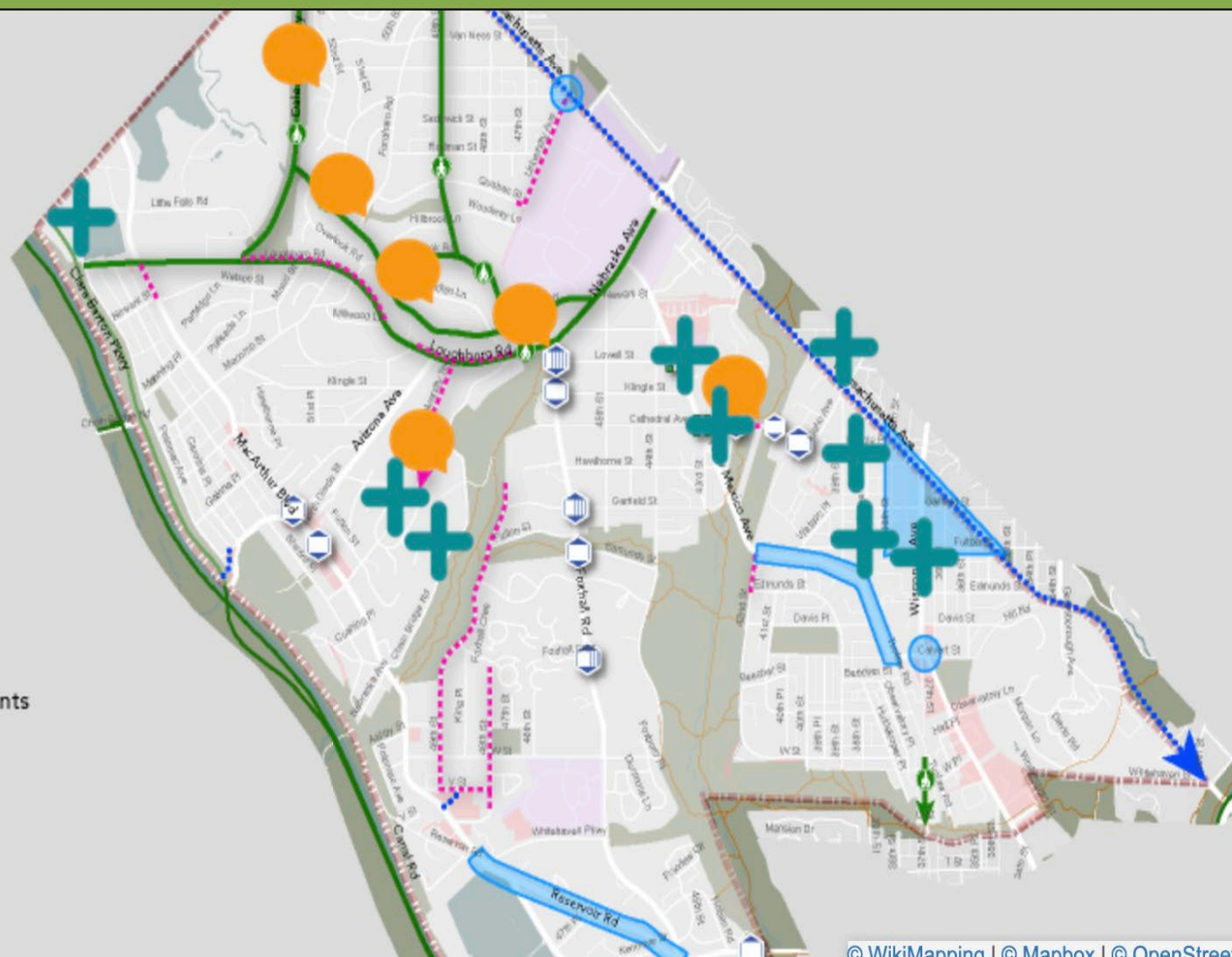
Photo by Colin Browne

Solutions for implementing projects



LEGEND

- Shared-use Path
- Sidewalk Installation
- Bicycle Facility Improvement
- Intersection Curb Extension
- Pedestrian Crossing Enhancements
- Multi-intersection Study



Add Comment

Description:Comment on Draft Recommendation

Initial comment: Sidewalks are a necessity. Safety and law demands DDOT install sidewalks on University TerraceNW and along Loughboro. Families and those with dogs need better protection from vehicles. The bus stop at Loughboro and UT is dangerous. There is no sidewalk and no crosswalk. I live on University Terrace.

I agree

I disagree

Add a comment

Please leave your own comment here.

Allowed:1000 characters. Used: 0 characters.

Add Comment

I will send an email in due course with detailed reasons why this is a dumb idea

May 21, 2019Guest

	Aug 23, 2019Guest
This will be extremely costly and serve very few.	Aug 13, 2019Guest
I Disagree	Jul 19, 2019Guest
This is not needed and does not make sense. Why is this being proposed?	Jul 19, 2019Guest
I Agree	May 30, 2019Guest
I Disagree	May 26, 2019Guest
I Disagree, this is inconsistent with what the community proposed there would be a tremendous cost to work around or eliminate existing structures, trees and utility poles.	May 21, 2019Guest
I Agree: sidewalks are desperately needed.	May 21, 2019Guest
I will send an email in due course with detailed reasons why this is a dumb idea	May 21, 2019Guest
I Disagree	May 21, 2019Guest
I Agree, how can home one possibly justify not having sidewalks when it IS the law and homeowners do NOT own the curbed area and up to 20' into their yard.	May 21, 2019Guest



Record Scratch* *Freeze Frame

I bet you're wondering how I got here!

**Once upon a
time I had a
project with a
lot of
stakeholders...**



Context: District

- War on Cars
- Growing Rapidly
- Chocolate to Cappuccino City



Context: Neighborhood



Google Maps 2009



Google Maps 2019

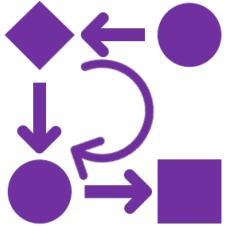


Unfreeze Frame

Back to this moment



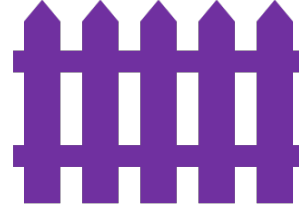
Where we went wrong...



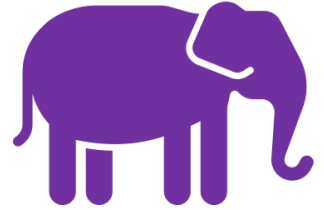
Process was unclear



Didn't address the problem of the community



Didn't address the barriers



Never addressed the elephant in the room

MONTGOMERY COUNTY VISION ZERO EQUITY TASK FORCE



Equality \neq Equity

Everyone
has the
same

Everyone
has what
they need



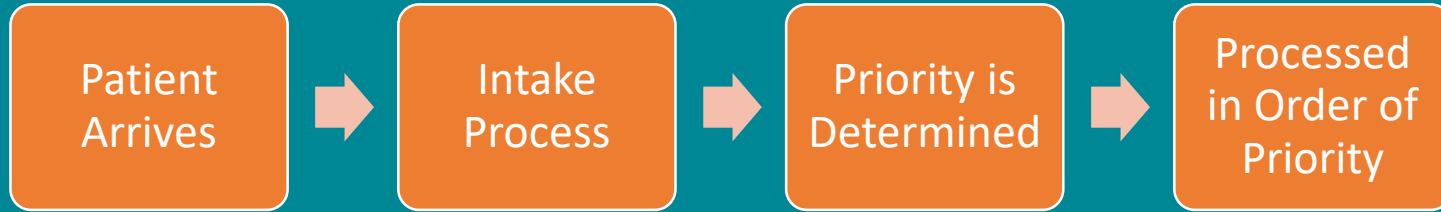
Image source: <https://www.sewallfoundation.org/new-gallery-1>

EXAMPLES



Image source: <http://tequityworks.com/portfolio-items/equity-vs-equality/>

Framework – Emergency Room Analogy



Decision
Framework

Vision Zero Equity Statement

To implement the ten-year Vision Zero Action Plan, Montgomery County will prioritize and allocate funding and resources to the communities that experience a disproportionate burden of traffic-related fatalities and serious injuries. This framework will ensure equitable outcomes for community centered projects as Montgomery County develops its Capital Improvement Program.

Guiding Principles for the ten-year Vision Zero action plan:

- **Community Engagement:** Montgomery County will consider everyone's voices and concerns, which includes being proactive to engage communities that may not be currently represented in the process or make requests for safety projects.
- **Access:** Residents all over Montgomery County can safely access multiple transportation options to reach their destination.
- **High Injury Network:** Using a data-informed approach, Montgomery County will prioritize funding to the high injury network, with special attention to equity emphasis areas as defined by the Metropolitan Washington Council of Governments and shown in the Vision Zero Two-Year Action Plan.
- **Address Historical Disinvestment:** Montgomery County will invest in areas that are historically underserved by transportation funding and projects that improve safety for people walking, biking, and using mobility assistive equipment (wheelchair, canes, etc.).

2020

Art created by Lexi Jones (4Stories Up)

2020

Art created by Lexi Jones (4Stories Up)

Recommendations

1

Acknowledge
where people
are

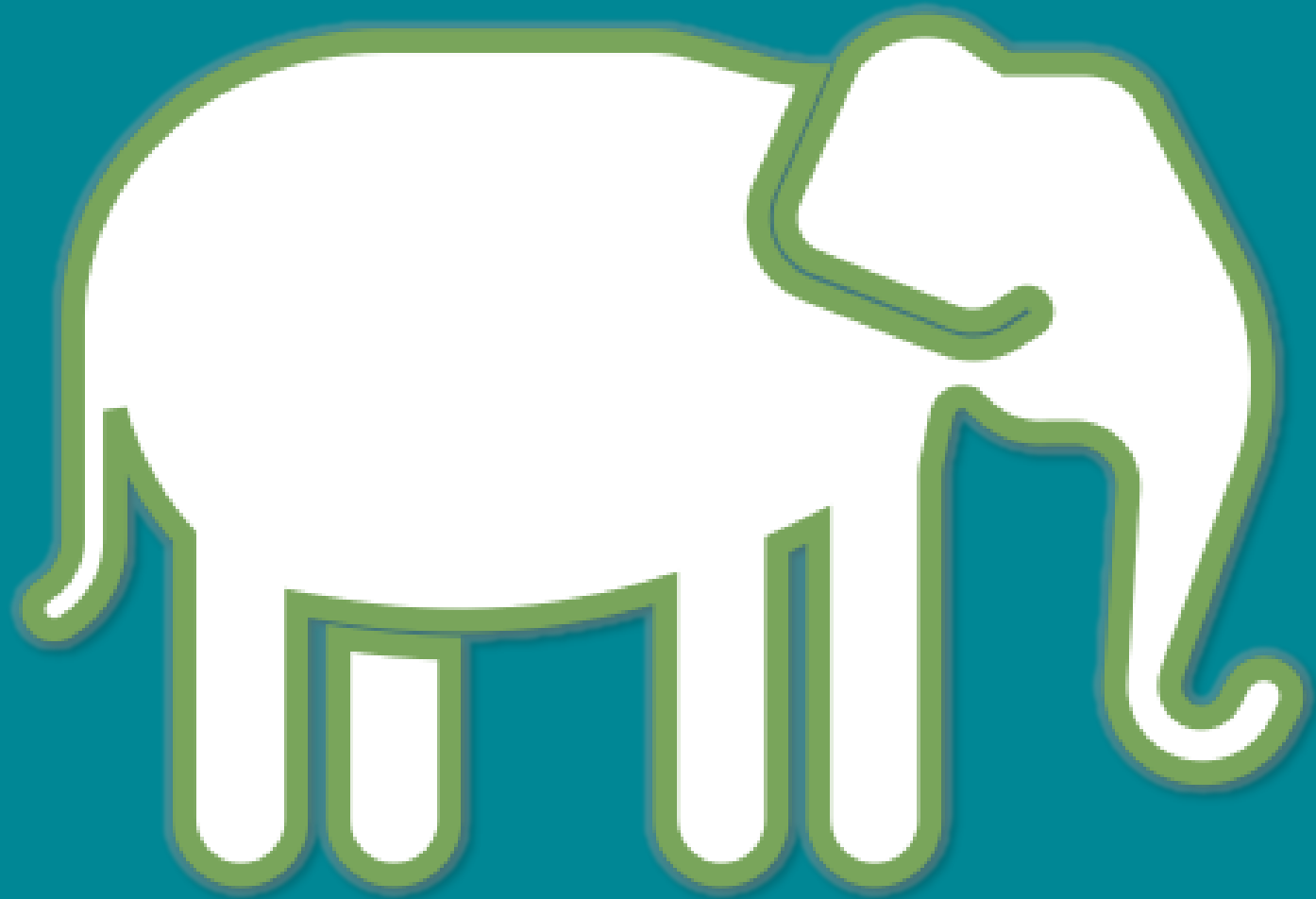
2

Work with the
community to
identify how to
remove barriers

3

Break it into
smaller
increments

**Final
Thought**



Veronica O. Davis, PE
vdavis@nspiregreen.com
@VeronicaODavis
@NspiregreenLLC

