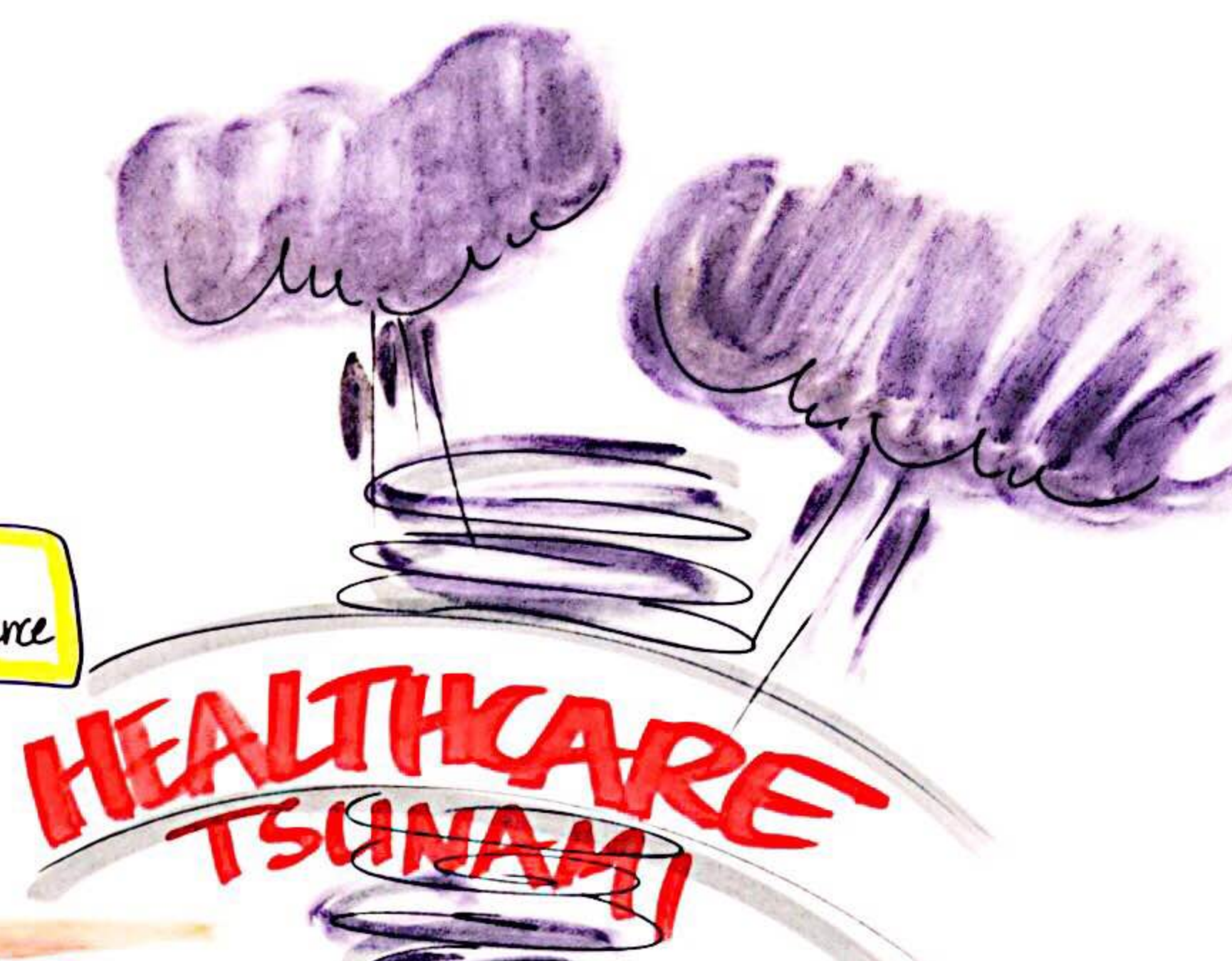


CAKE ANGEL: A PATENT-PENDING VIRTUAL INTELLIGENT CAREGIVING ASSISTANT

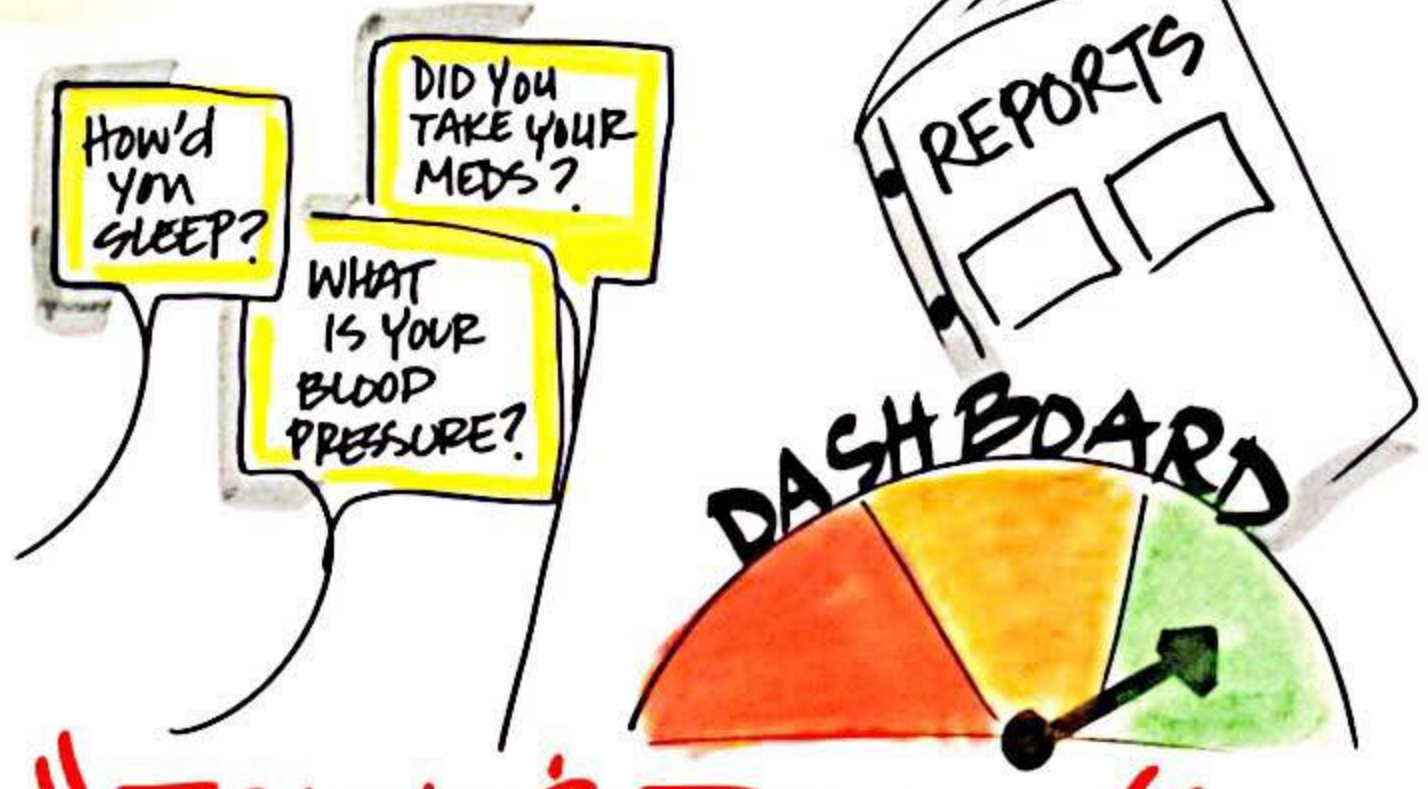
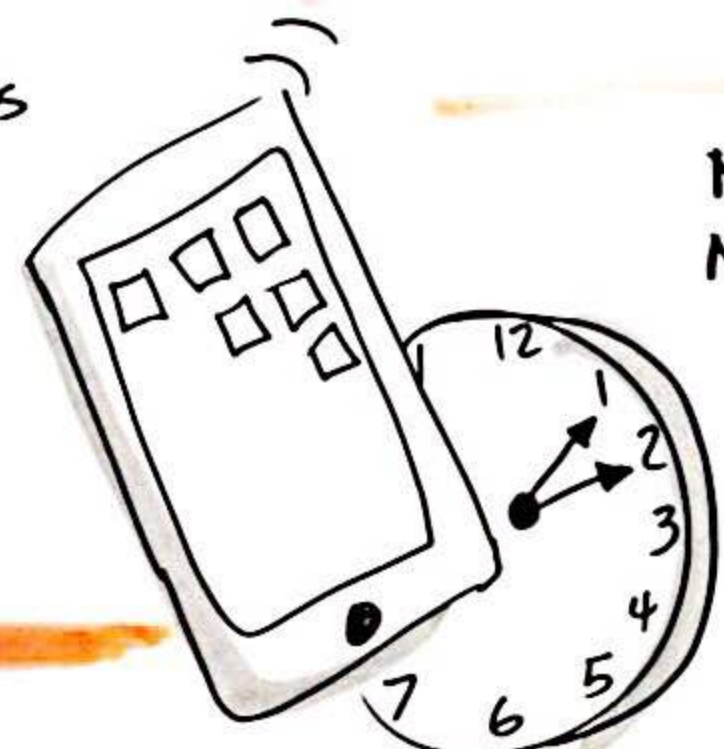
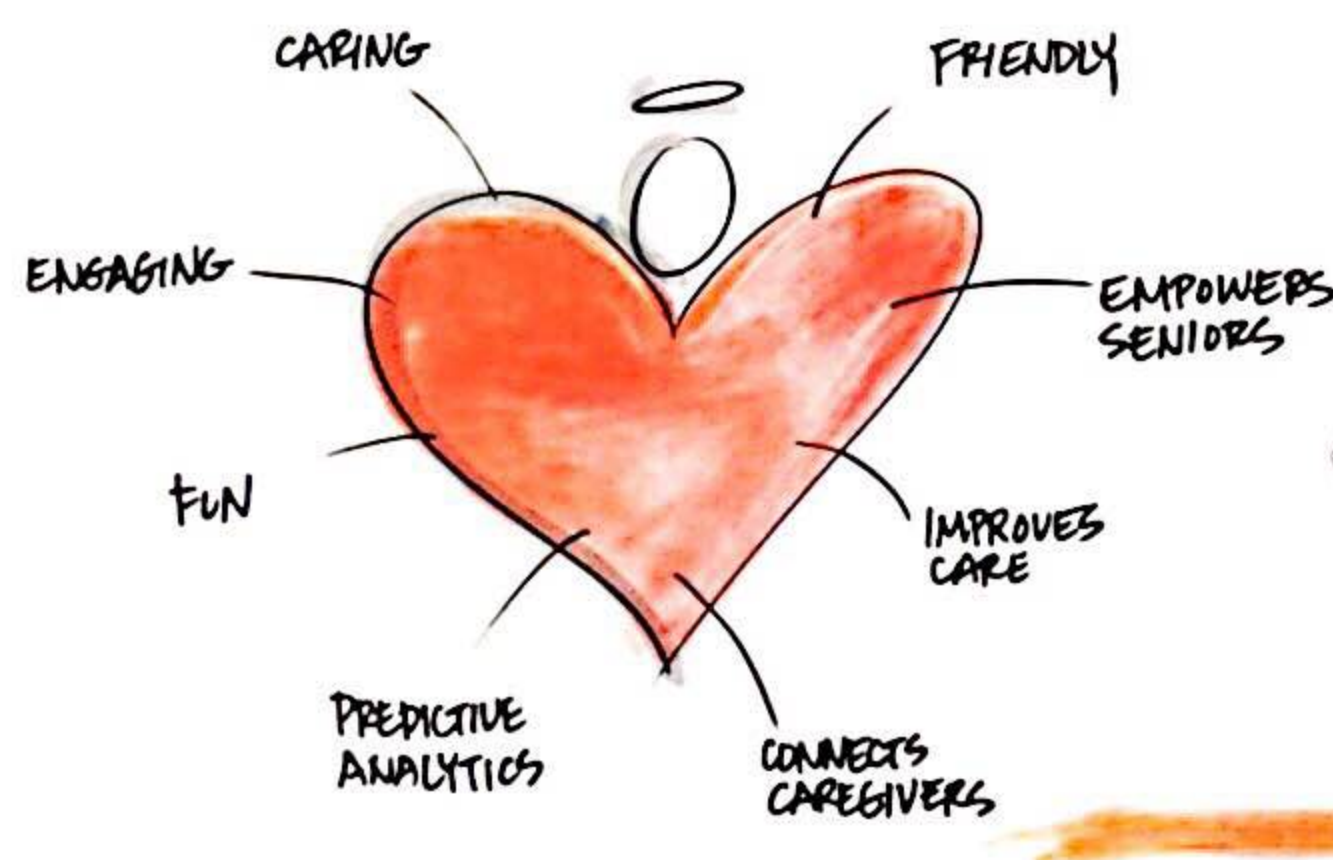


CARE Angel
 A = Automated
 N = Intelligent
 G = Monitoring
 E = caregiving
 L = Platform



\$2T+ AFFORDABLE COSTS
117M NOT PROPERLY CARED FOR
+85% SPENT ON CHRONIC CONDITIONS

"A CARE CALL A DAY KEEPS THE DOCTOR AWAY"



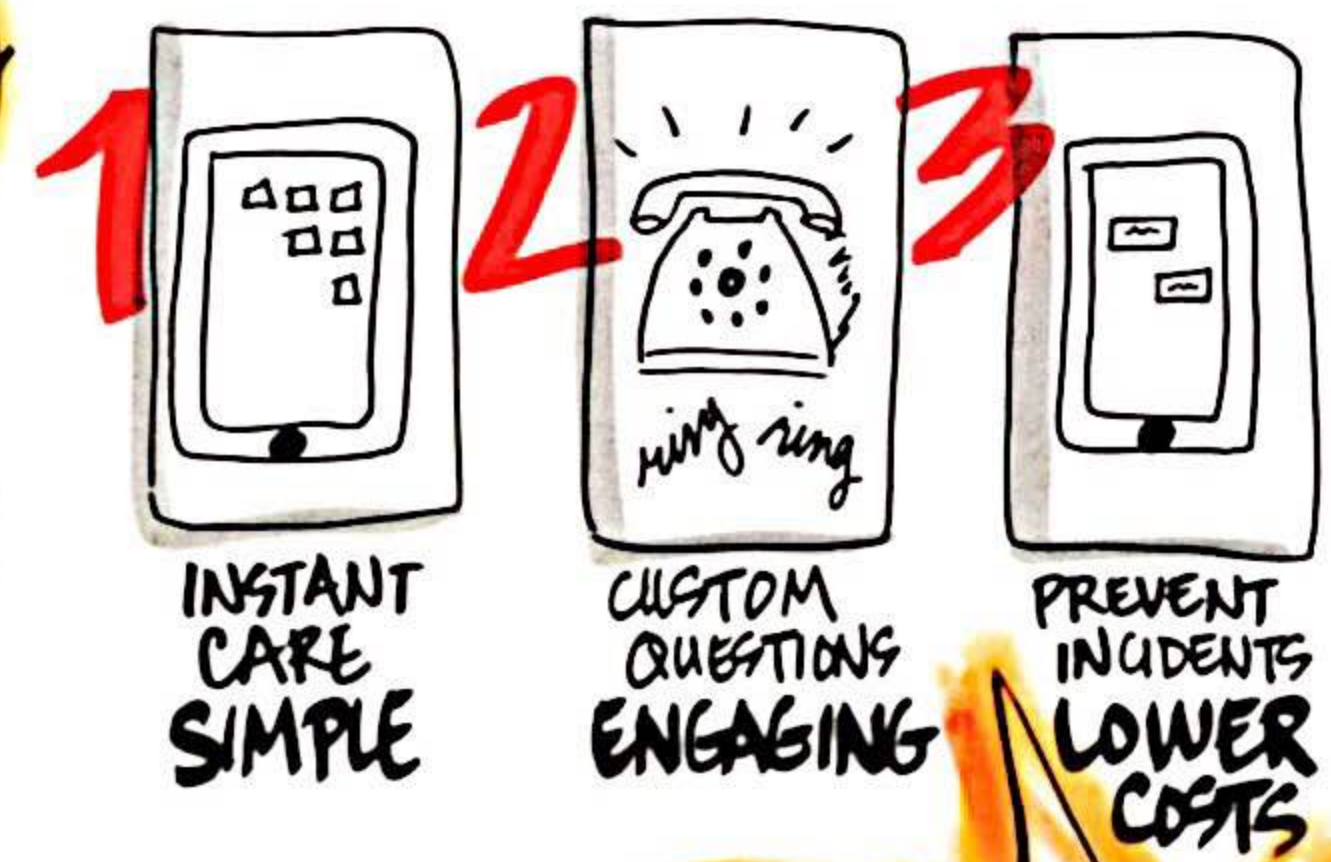
"TRACK 3 TRENDS"
100% REACH

- NO CREDIT CARDS
- NO TECH!
- NO TRAINING!
- NO DOWNLOADS!

THE SOLUTION... "SIRI FOR SENIORS!"
 AI POWERED DIGITAL CARE CALLS!!

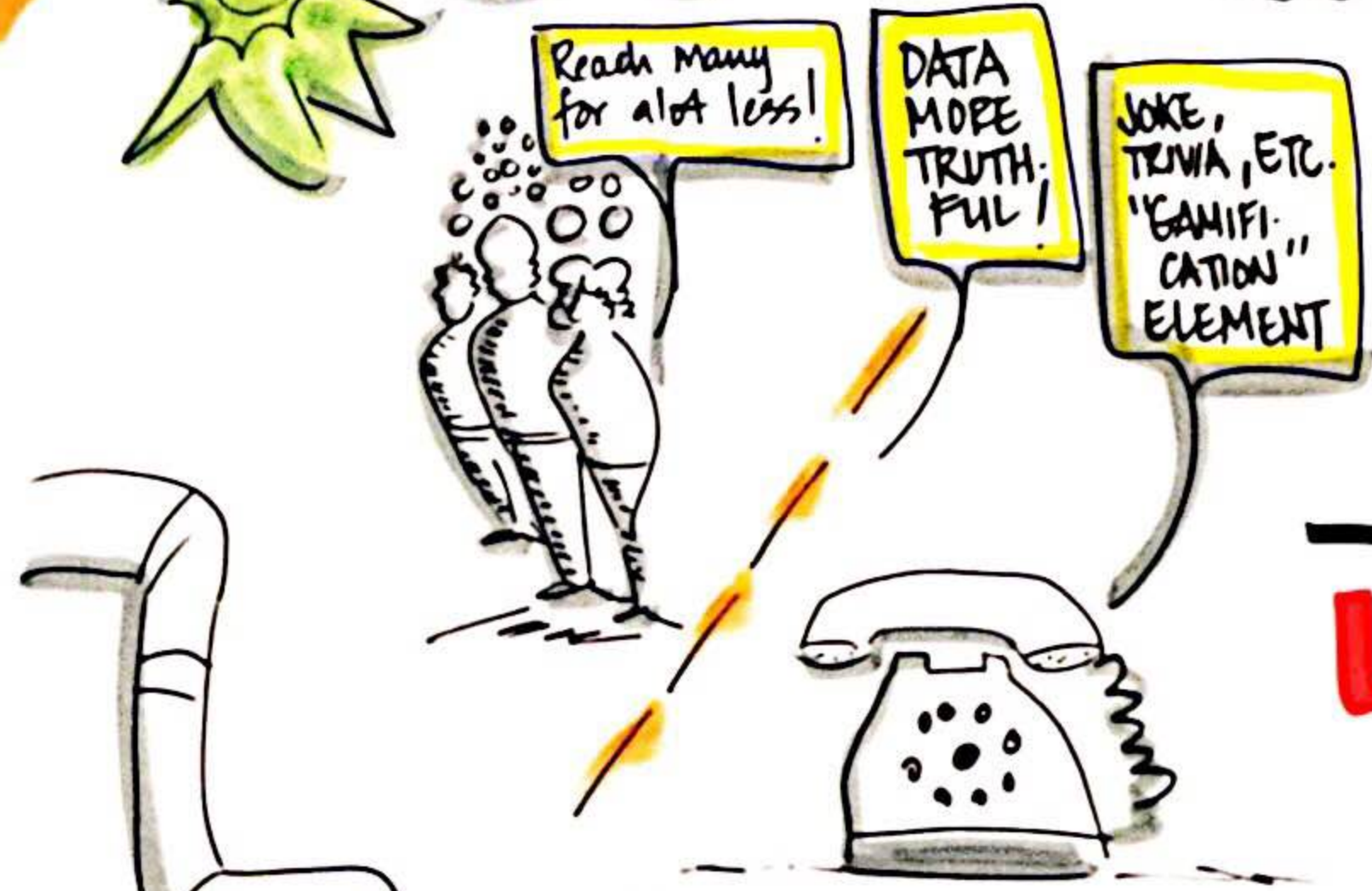


- *50% SENIORS DON'T ADHERE TO MEDS
- *49% AVOIDABLE HOSPITALIZATION
- *75% SENIORS DON'T USE SMARTPHONES



EXPECT TO RAISE \$10M
SELF-FUNDED
\$2M FINANCIALS

"CARE IT FORWARD"
 FOR CORPORATE WORLD \$50K
 10,000 FAMILIES



ASO MSO MOST AT RISK

LIABILITIES?
 WE PROVIDE A PLATFORM FOR PARTNERS!

"WE HAVE A 'MY FAMILY DOESN'T CARE ABOUT ME' SYNDROME"
 NOT TRYING TO UNDERSTAND 'FREE SPEECH'

PIPELINE? "CONSENT"
 Platform specific to patient... Data becomes available to others.
 WE UNLOCK the BLACK BOX!

1 INSTRUCTIONAL MODE... guided process!